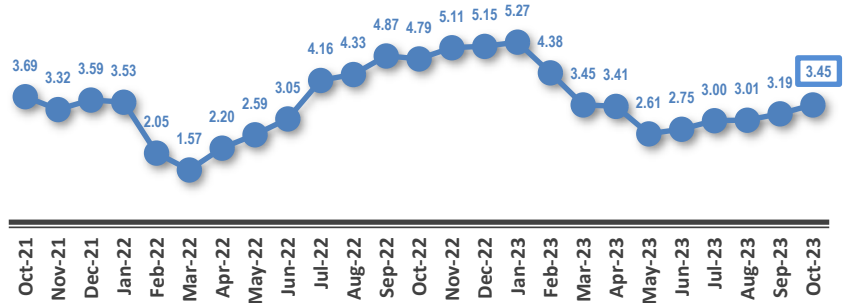
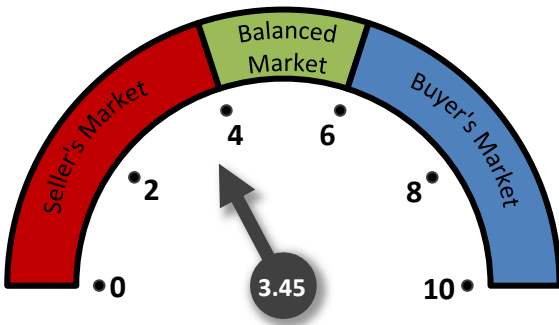
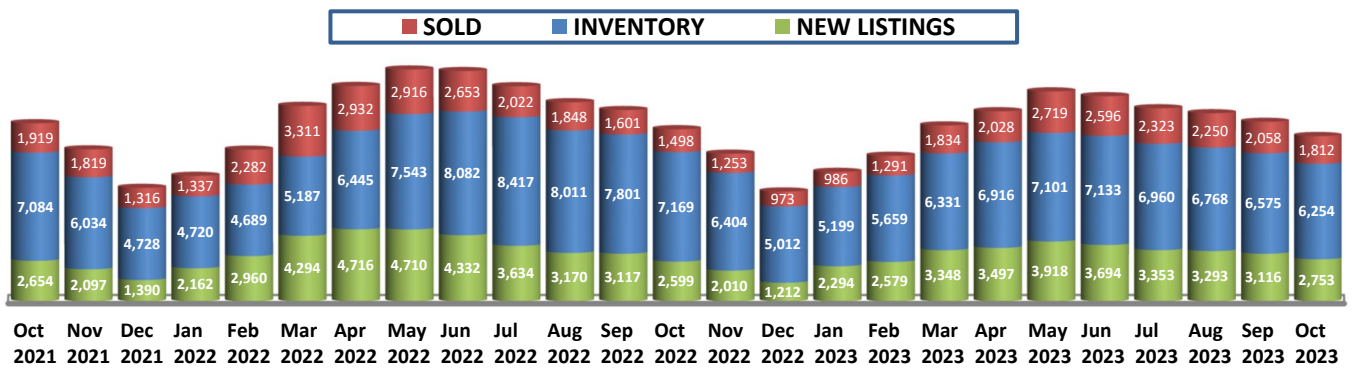


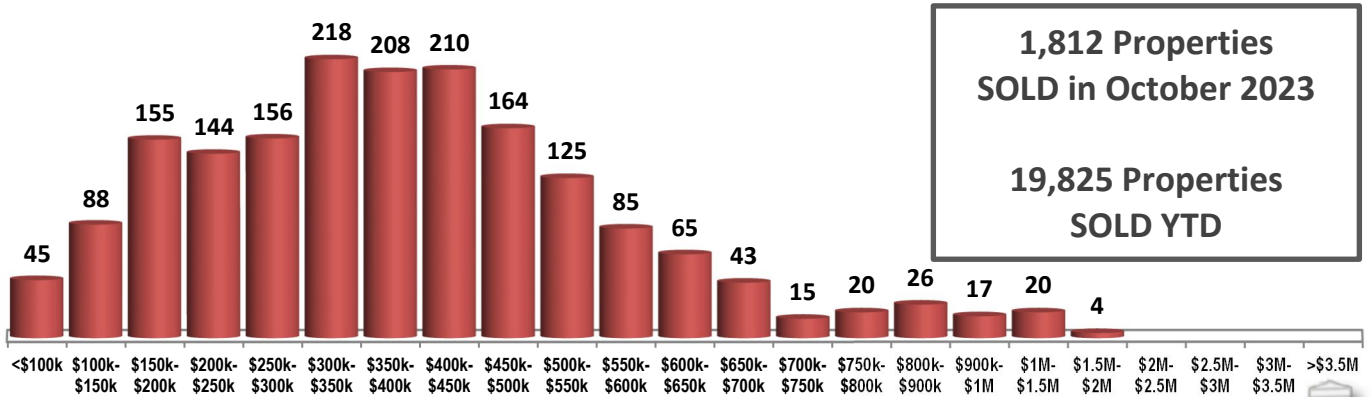
MONTHS OF INVENTORY



SOLD / INVENTORY / NEW LISTINGS



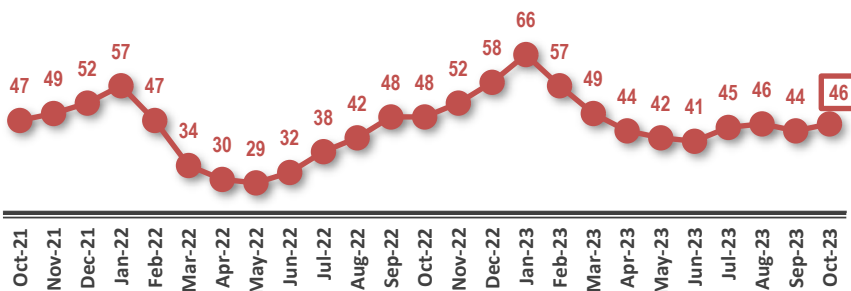
SOLD PROPERTIES BY PRICE RANGE



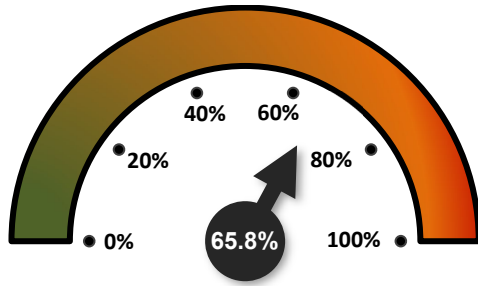
1,812 Properties SOLD in October 2023

19,825 Properties SOLD YTD

AVERAGE DAYS ON THE MARKET



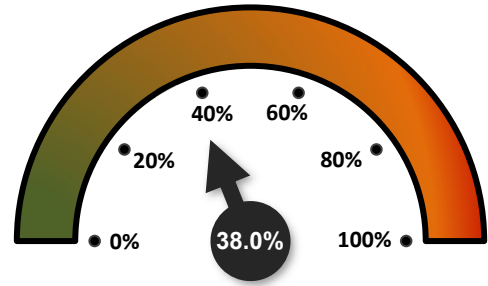
SALES-TO-NEW LISTINGS RATIO



↓ FROM 66.0% IN SEPTEMBER 2023

↑ FROM 57.6% IN OCTOBER 2022

ODDS OF SELLING IN 90 DAYS OR LESS



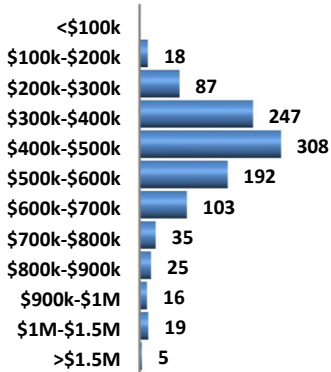
↓ FROM 39.2% IN SEPTEMBER 2023

↑ FROM 28.6% IN OCTOBER 2022

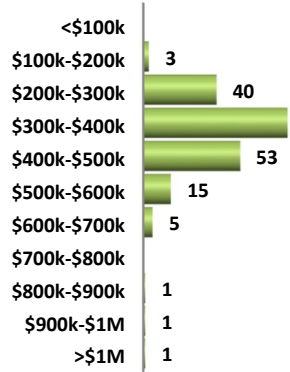
DETAILS BY PROPERTY TYPE

	DETACHED	SEMI-DETACHED	ROW / TOWNHOUSES	APARTMENT CONDOS
AVERAGE SOLD PRICE	\$486,751	\$385,895	\$258,779	\$203,663
MEDIAN SOLD PRICE	\$451,000	\$373,450	\$252,250	\$168,750
SOLD PROPERTIES	1,055	198	268	291
SOLD PROPERTIES YTD	11,821	2,193	2,707	3,104
NEW LISTINGS	1,620	251	390	492
SALES-TO-NEW LISTINGS RATIO	65.1%	78.9%	68.7%	59.1%
AVERAGED DAYS ON THE MARKET	43	47	42	61

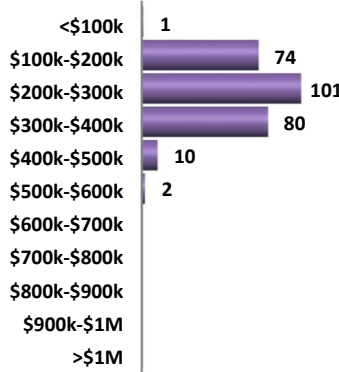
DETACHED HOMES SOLD BY PRICE RANGE



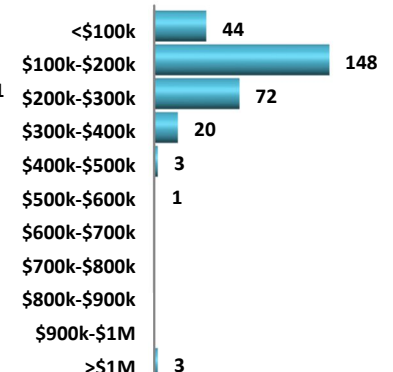
SEMI-DETACHED HOMES SOLD BY PRICE RANGE



ROW / TOWNHOUSES SOLD BY PRICE RANGE



APARTMENT CONDOMINIUMS SOLD BY PRICE RANGE



AVERAGE SOLD PRICES OVER 2 YEARS

