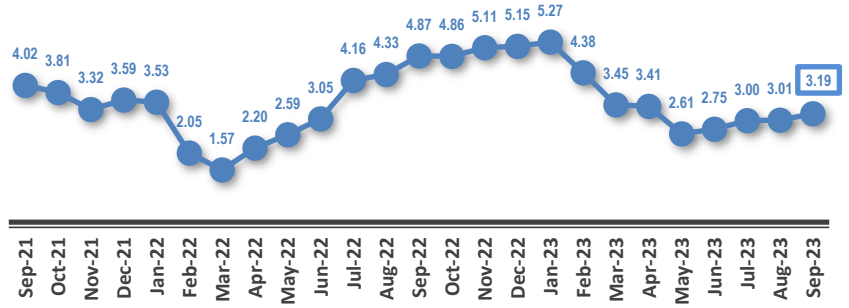
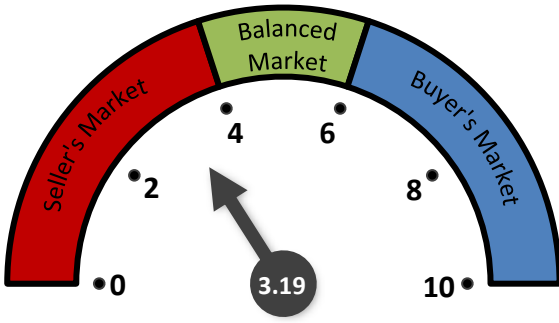
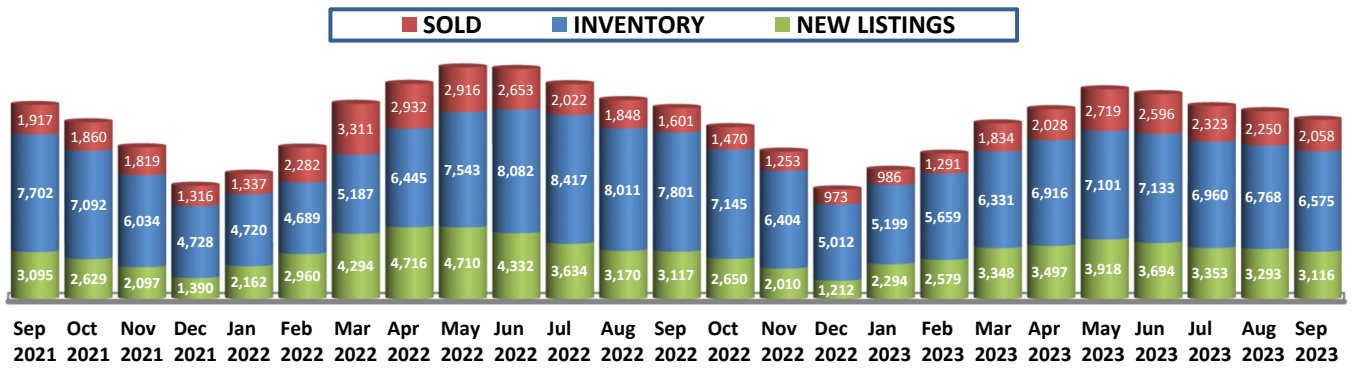


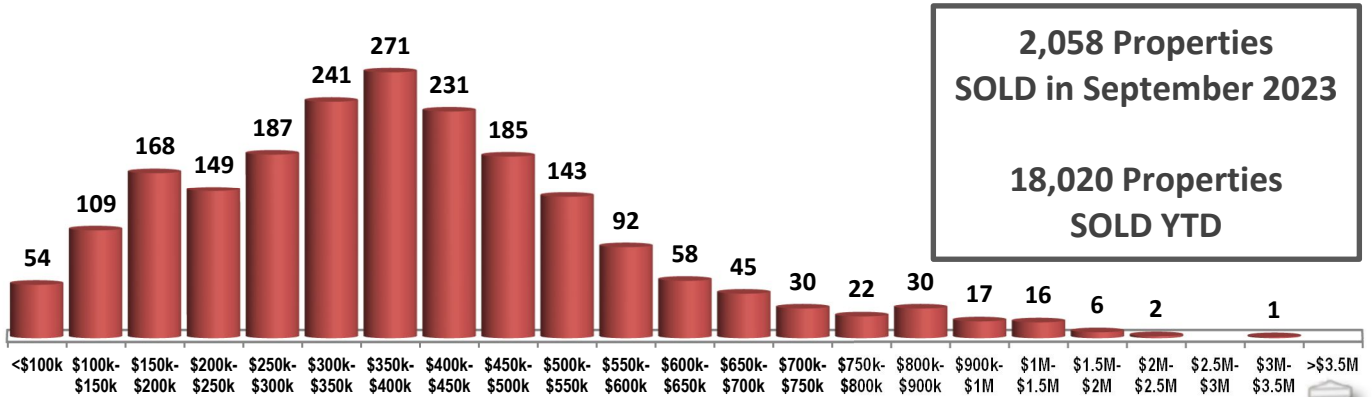
MONTHS OF INVENTORY



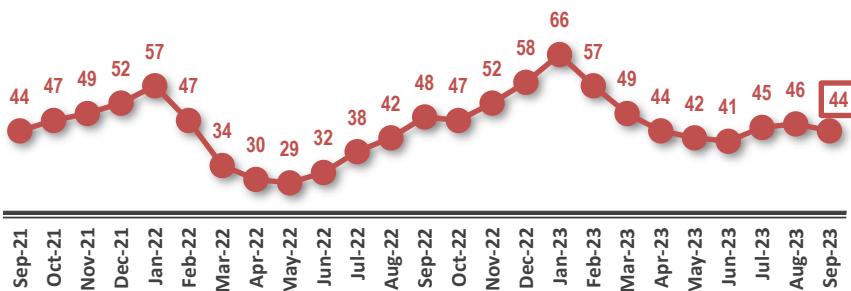
SOLD / INVENTORY / NEW LISTINGS



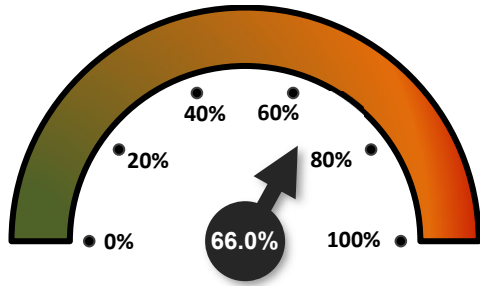
SOLD PROPERTIES BY PRICE RANGE



AVERAGE DAYS ON THE MARKET

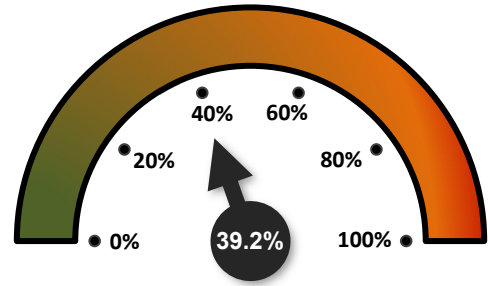


SALES-TO-NEW LISTINGS RATIO



↓ FROM 68.3% IN AUGUST 2023
↑ FROM 51.4% IN SEPTEMBER 2022

ODDS OF SELLING IN 90 DAYS OR LESS

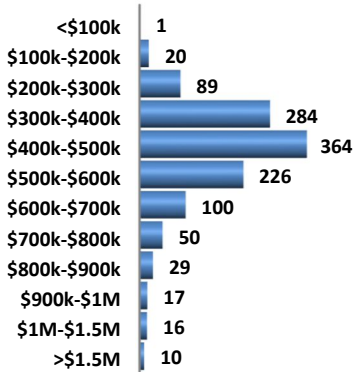


↓ FROM 41.1% IN AUGUST 2023
↑ FROM 30.4% IN SEPTEMBER 2022

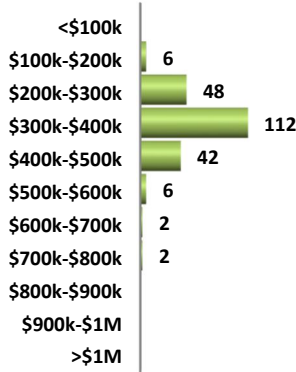
DETAILS BY PROPERTY TYPE

	DETACHED	SEMI-DETACHED	ROW / TOWNHOUSES	APARTMENT CONDOS
AVERAGE SOLD PRICE	\$493,328	\$353,929	\$267,100	\$182,103
MEDIAN SOLD PRICE	\$453,000	\$351,450	\$268,950	\$168,500
SOLD PROPERTIES	1,206	218	274	360
SOLD PROPERTIES YTD	10,770	1,995	2,441	2,814
NEW LISTINGS	1,906	292	375	543
SALES-TO-NEW LISTINGS RATIO	63.3%	74.7%	73.1%	66.3%
AVERAGED DAYS ON THE MARKET	42	37	42	54

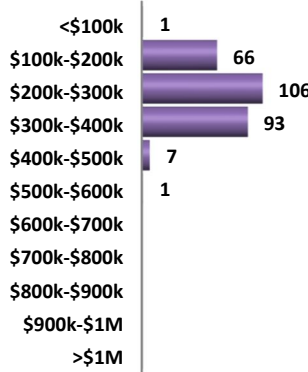
DETACHED HOMES SOLD BY PRICE RANGE



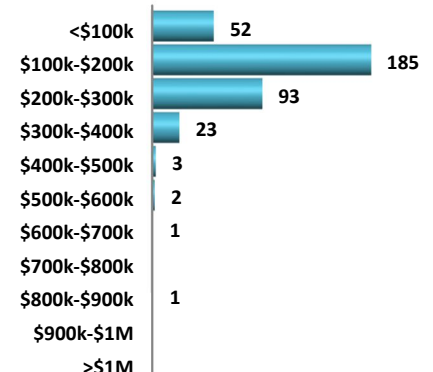
SEMI-DETACHED HOMES SOLD BY PRICE RANGE



ROW / TOWNHOUSES SOLD BY PRICE RANGE



APARTMENT CONDOMINIUMS SOLD BY PRICE RANGE



AVERAGE SOLD PRICES OVER 2 YEARS

