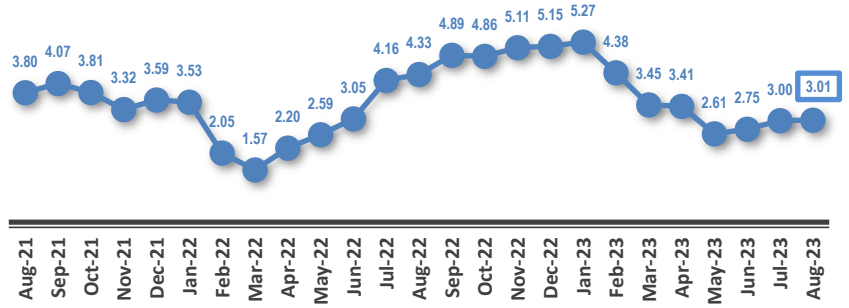
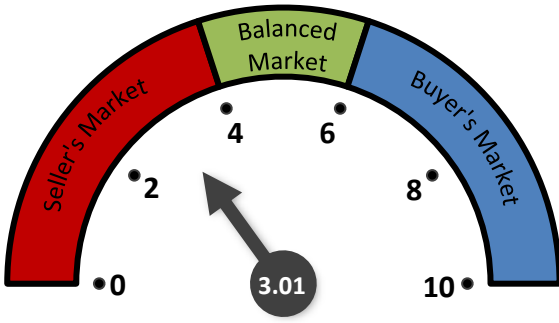
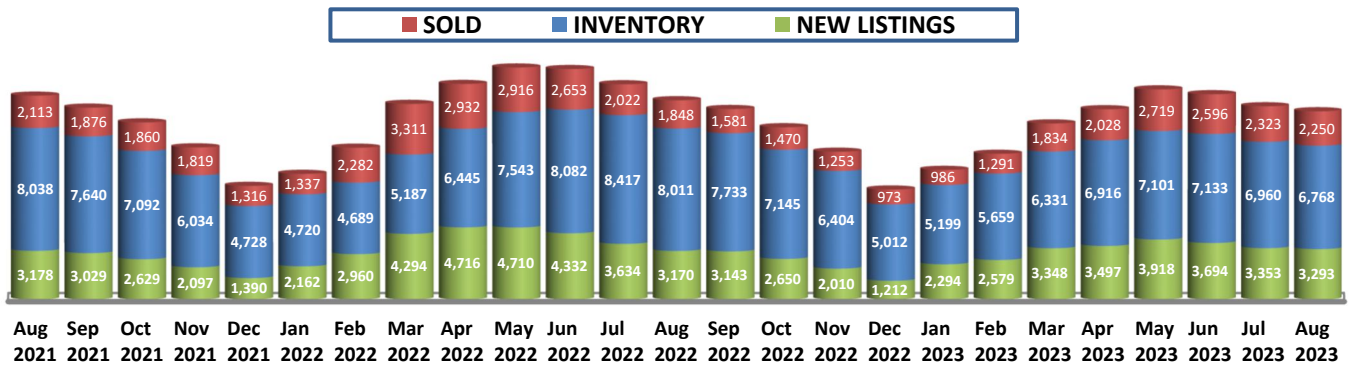


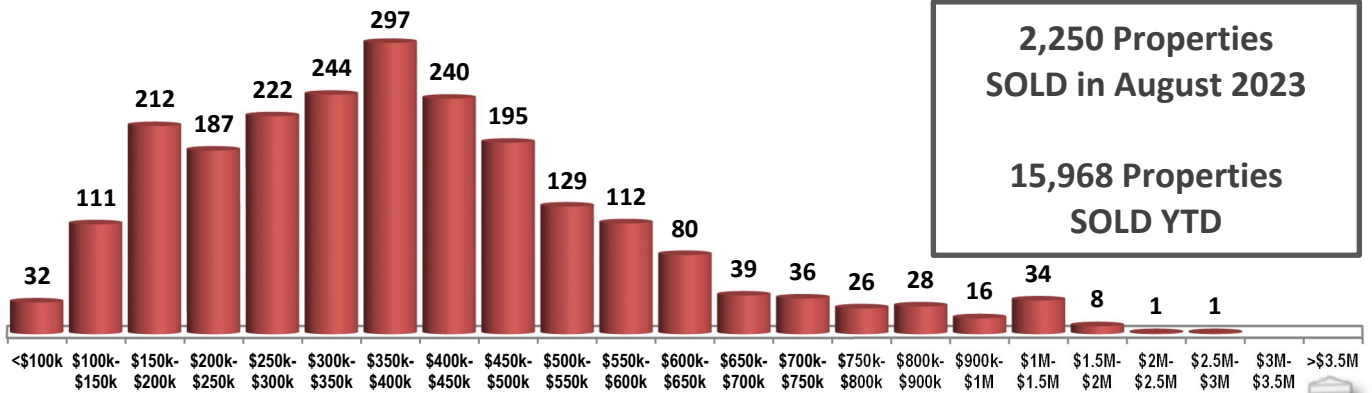
**MONTHS OF INVENTORY**



**SOLD / INVENTORY / NEW LISTINGS**

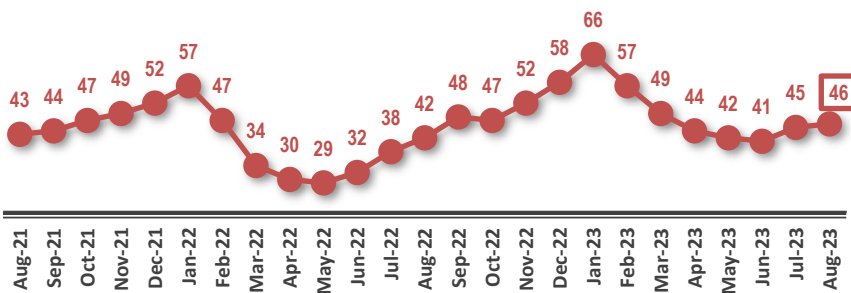


**SOLD PROPERTIES BY PRICE RANGE**

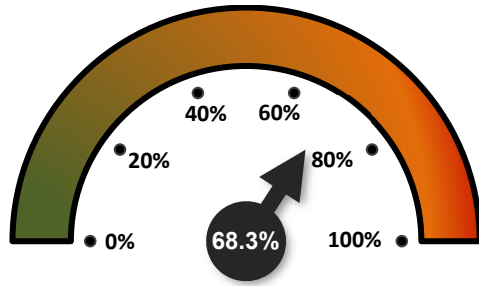


**2,250 Properties SOLD in August 2023**  
**15,968 Properties SOLD YTD**

**AVERAGE DAYS ON THE MARKET**

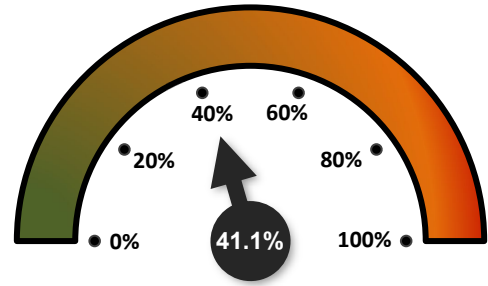


**SALES-TO-NEW LISTINGS RATIO**



↓ FROM 69.3% IN JULY 2023  
↑ FROM 58.3% IN AUGUST 2022

**ODDS OF SELLING IN 90 DAYS OR LESS**

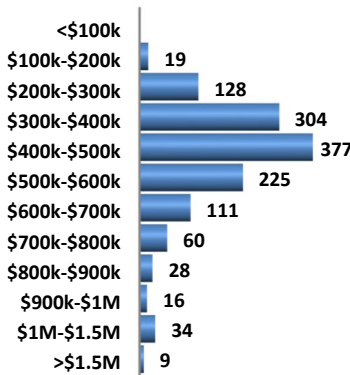


↓ FROM 42.7% IN JULY 2023  
↑ FROM 34.9% IN AUGUST 2022

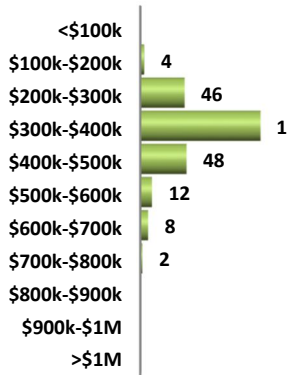
**DETAILS BY PROPERTY TYPE**

	DETACHED	SEMI-DETACHED	ROW / TOWNHOUSES	APARTMENT CONDOS
AVERAGE SOLD PRICE	\$495,005	\$373,175	\$253,345	\$192,815
MEDIAN SOLD PRICE	\$450,000	\$370,000	\$247,000	\$180,000
SOLD PROPERTIES	1,311	245	345	349
SOLD PROPERTIES YTD	9,568	1,777	2,167	2,456
NEW LISTINGS	2,022	329	386	556
SALES-TO-NEW LISTINGS RATIO	64.8%	74.5%	89.4%	62.8%
AVERAGED DAYS ON THE MARKET	45	42	44	56

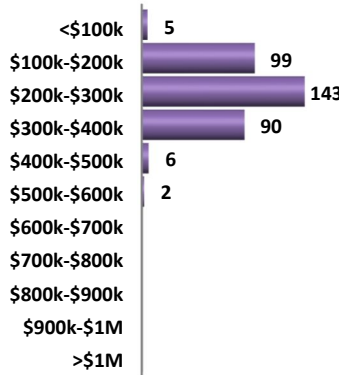
**DETACHED HOMES SOLD BY PRICE RANGE**



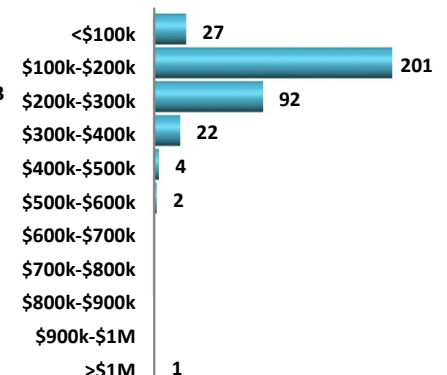
**SEMI-DETACHED HOMES SOLD BY PRICE RANGE**



**ROW / TOWNHOUSES SOLD BY PRICE RANGE**



**APARTMENT CONDOMINIUMS SOLD BY PRICE RANGE**



**AVERAGE SOLD PRICES OVER 2 YEARS**

