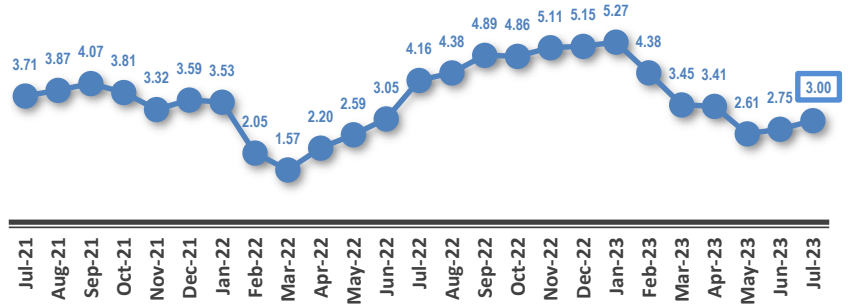
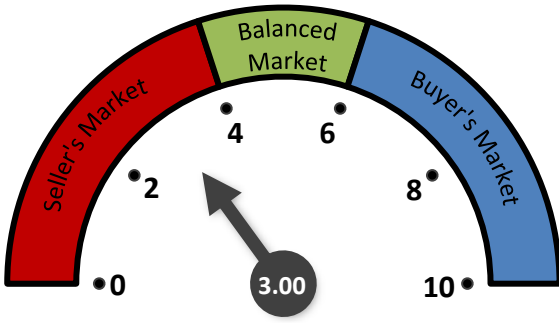
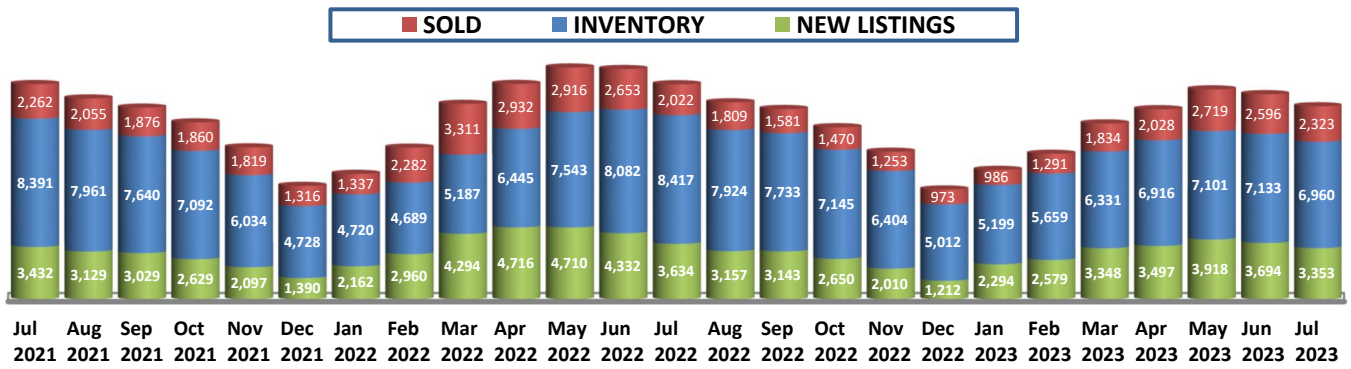


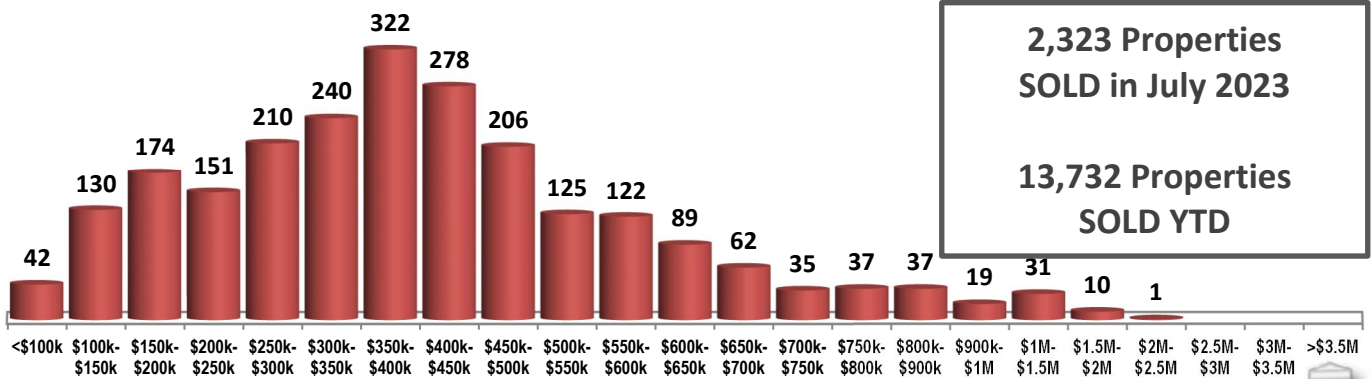
MONTHS OF INVENTORY



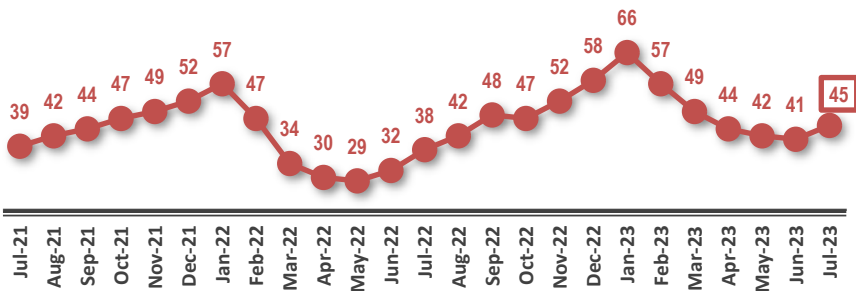
SOLD / INVENTORY / NEW LISTINGS



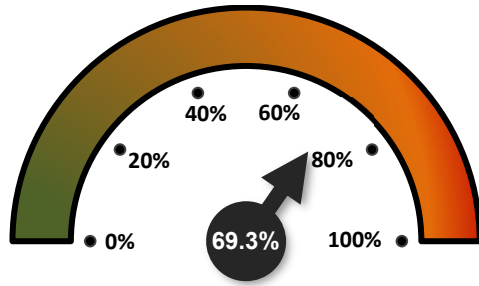
SOLD PROPERTIES BY PRICE RANGE



AVERAGE DAYS ON THE MARKET

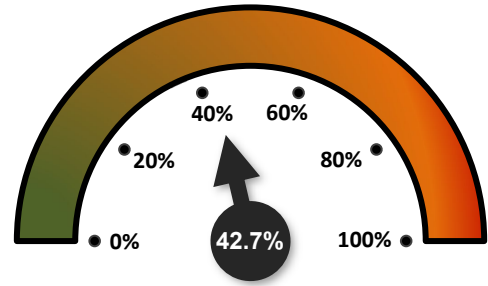


SALES-TO-NEW LISTINGS RATIO



↓ FROM 70.3% IN JUNE 2023
↑ FROM 55.6% IN JULY 2022

ODDS OF SELLING IN 90 DAYS OR LESS

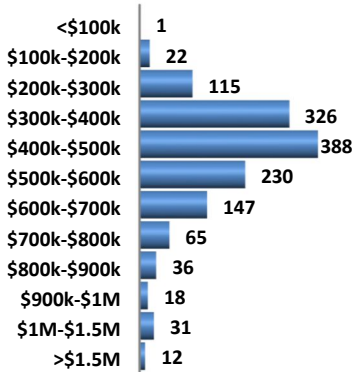


↑ FROM 42.1% IN JUNE 2023
↑ FROM 39.7% IN JULY 2022

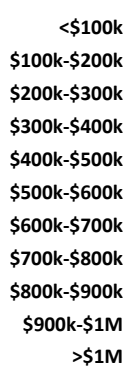
DETAILS BY PROPERTY TYPE

	DETACHED	SEMI-DETACHED	ROW / TOWNHOUSES	APARTMENT CONDOS
AVERAGE SOLD PRICE	\$503,542	\$378,902	\$264,128	\$194,823
MEDIAN SOLD PRICE	\$455,000	\$370,550	\$260,000	\$174,000
SOLD PROPERTIES	1,391	277	280	375
SOLD PROPERTIES YTD	8,268	1,532	1,823	2,109
NEW LISTINGS	2,051	293	382	627
SALES-TO-NEW LISTINGS RATIO	67.8%	94.5%	73.3%	59.8%
AVERAGED DAYS ON THE MARKET	44	35	41	58

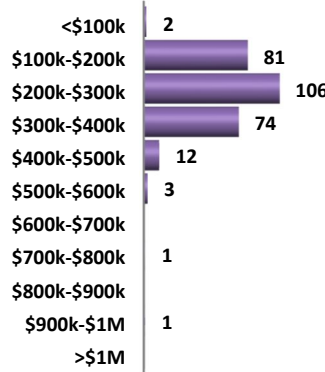
DETACHED HOMES SOLD BY PRICE RANGE



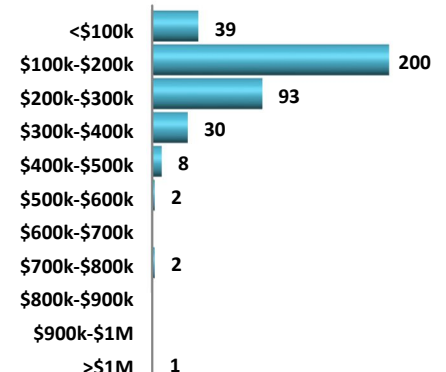
SEMI-DETACHED HOMES SOLD BY PRICE RANGE



ROW / TOWNHOUSES SOLD BY PRICE RANGE



APARTMENT CONDOMINIUMS SOLD BY PRICE RANGE



AVERAGE SOLD PRICES OVER 2 YEARS

