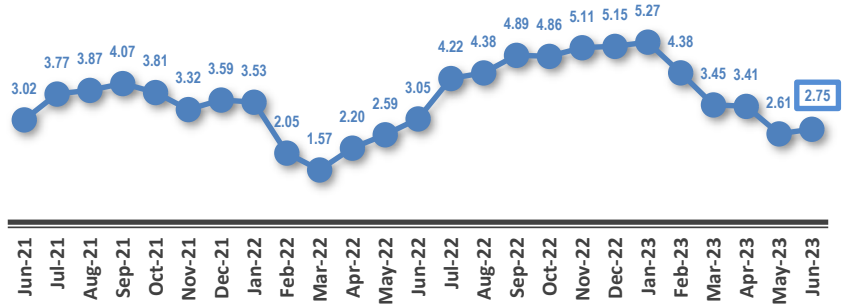
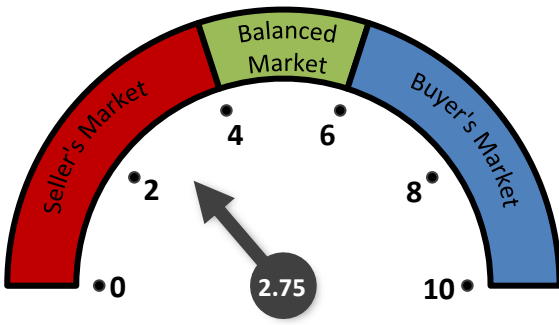
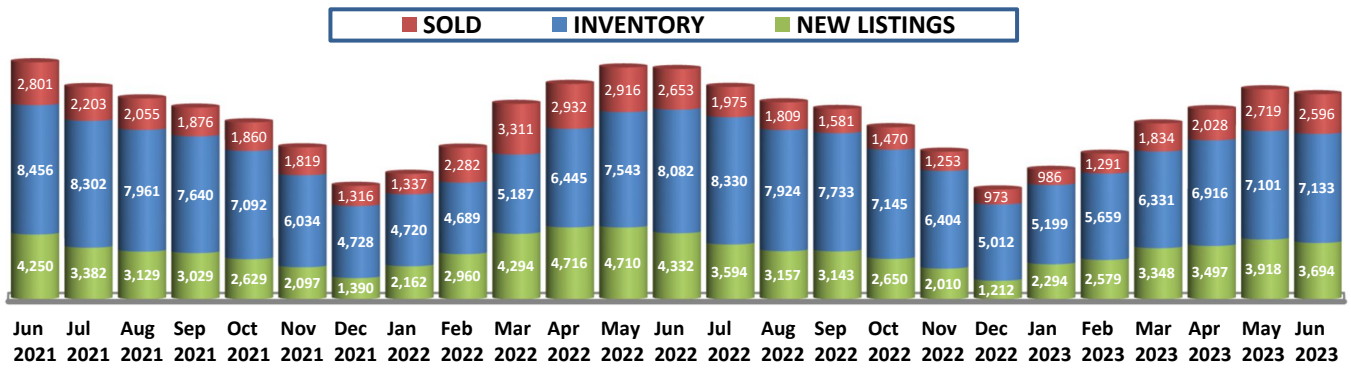


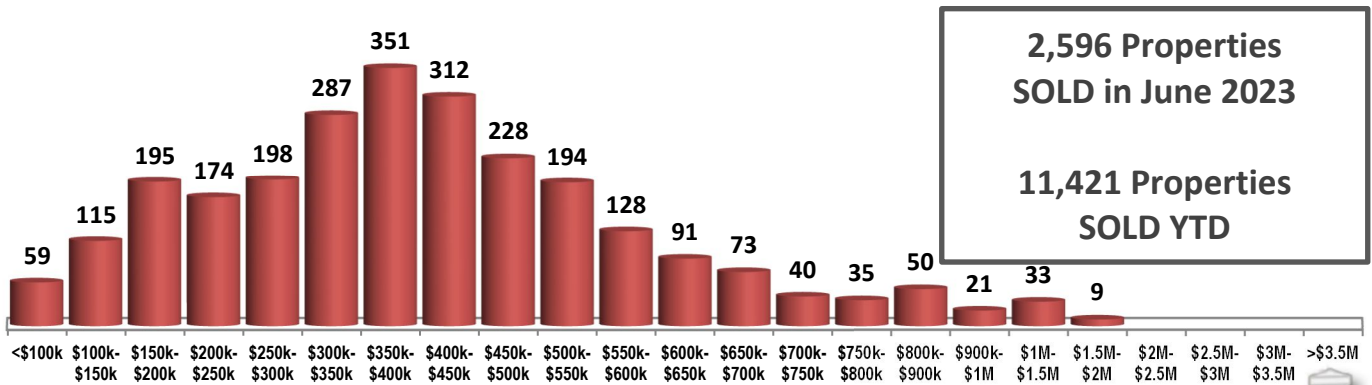
**MONTHS OF INVENTORY**



**SOLD / INVENTORY / NEW LISTINGS**



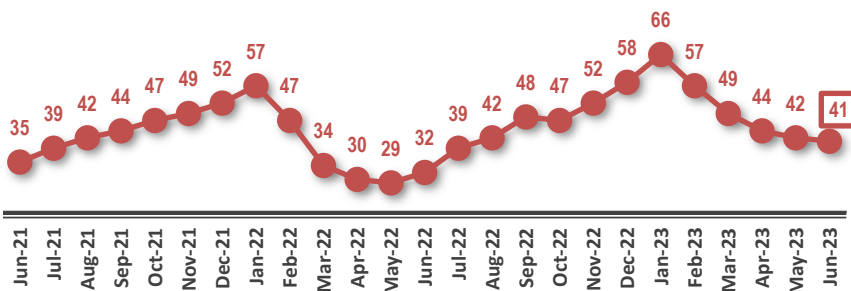
**SOLD PROPERTIES BY PRICE RANGE**



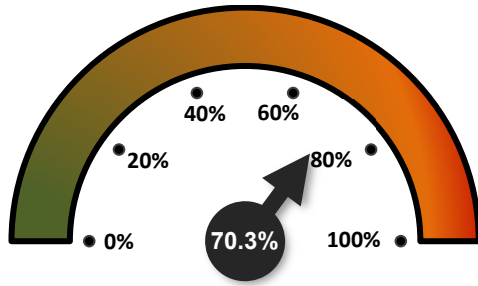
**2,596 Properties SOLD in June 2023**

**11,421 Properties SOLD YTD**

**AVERAGE DAYS ON THE MARKET**

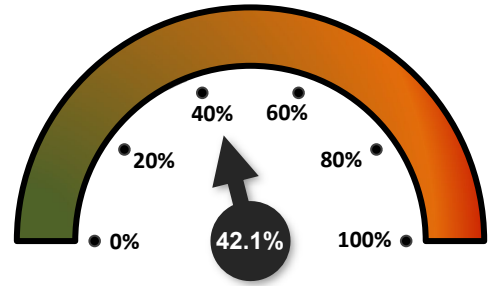


SALES-TO-NEW LISTINGS RATIO



↑ FROM 69.4% IN MAY 2023  
 ↑ FROM 61.2% IN JUNE 2022

ODDS OF SELLING IN 90 DAYS OR LESS

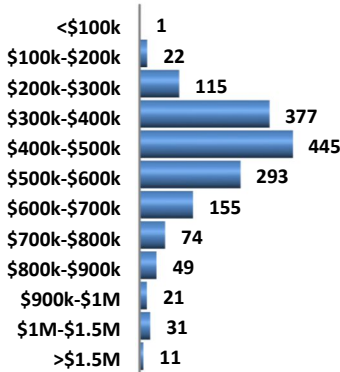


↑ FROM 40.1% IN MAY 2023  
 ↓ FROM 44.9% IN JUNE 2022

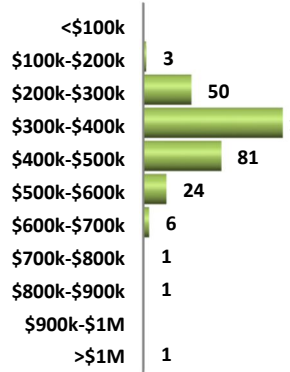
DETAILS BY PROPERTY TYPE

	DETACHED	SEMI-DETACHED	ROW / TOWNHOUSES	APARTMENT CONDOS
AVERAGE SOLD PRICE	\$500,496	\$382,883	\$257,812	\$194,910
MEDIAN SOLD PRICE	\$460,000	\$375,500	\$251,000	\$175,000
SOLD PROPERTIES	1,594	312	297	393
SOLD PROPERTIES YTD	6,884	1,256	1,546	1,735
NEW LISTINGS	2,196	359	451	688
SALES-TO-NEW LISTINGS RATIO	72.6%	86.9%	65.9%	57.1%
AVERAGED DAYS ON THE MARKET	40	34	40	55

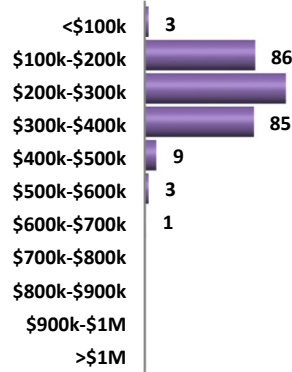
DETACHED HOMES SOLD BY PRICE RANGE



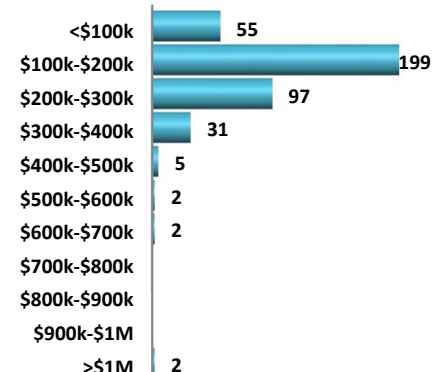
SEMI-DETACHED HOMES SOLD BY PRICE RANGE



ROW / TOWNHOUSES SOLD BY PRICE RANGE



APARTMENT CONDOMINIUMS SOLD BY PRICE RANGE



AVERAGE SOLD PRICES OVER 2 YEARS

