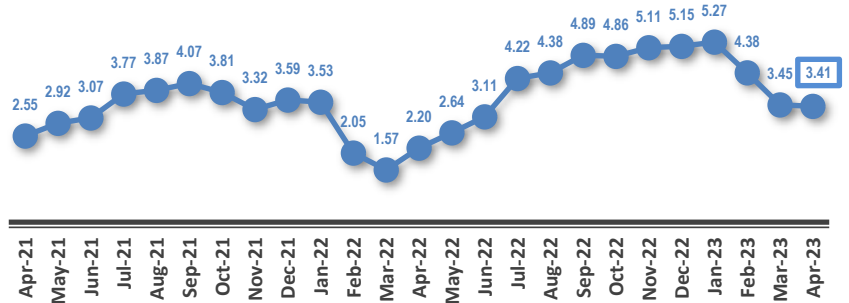
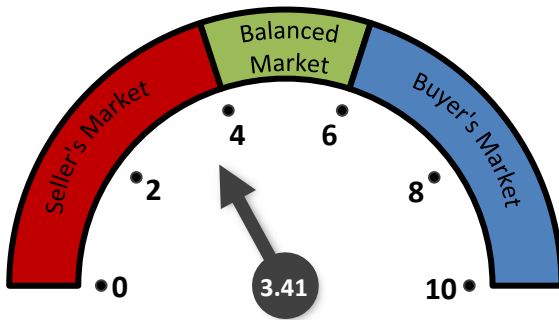
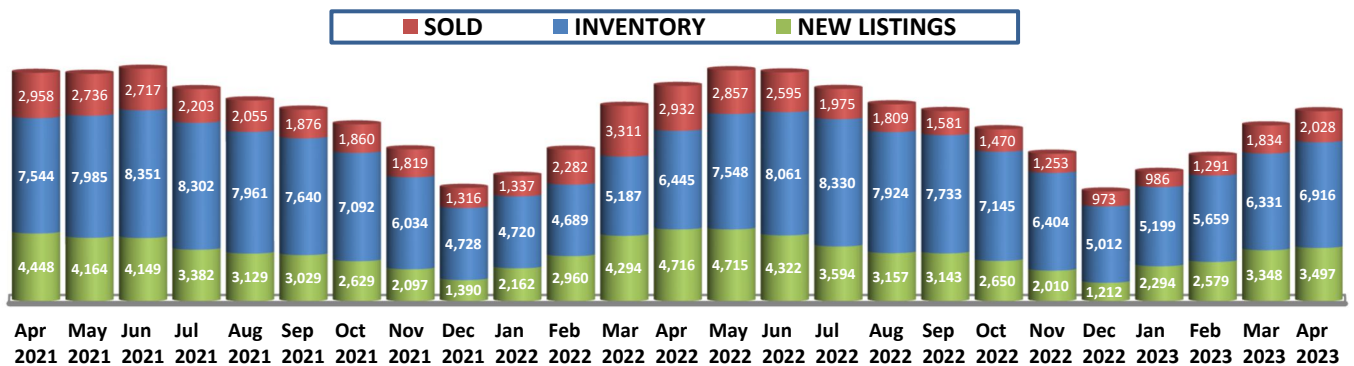


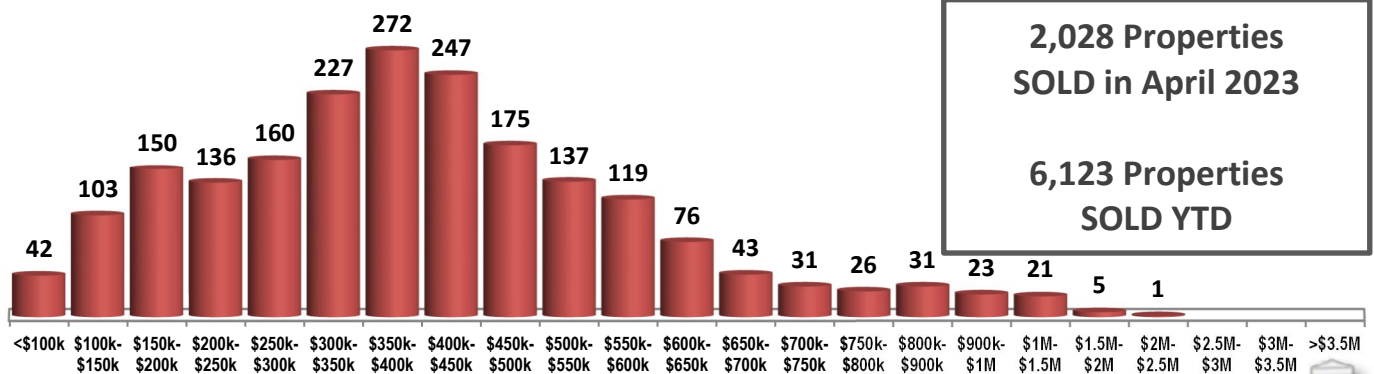
**MONTHS OF INVENTORY**



**SOLD / INVENTORY / NEW LISTINGS**



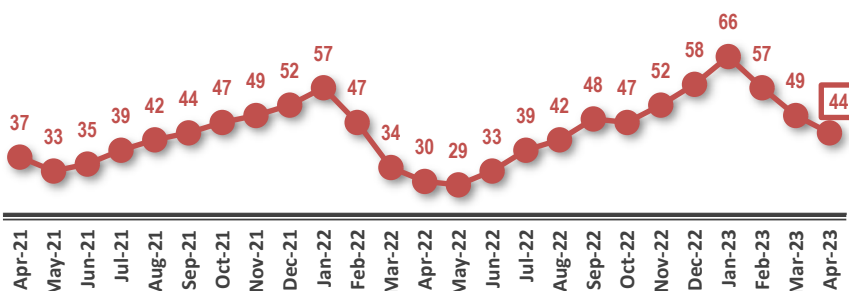
**SOLD PROPERTIES BY PRICE RANGE**



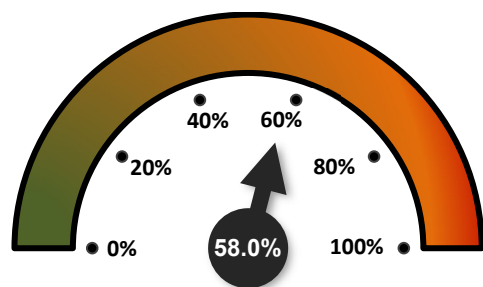
**2,028 Properties  
SOLD in April 2023**

**6,123 Properties  
SOLD YTD**

**AVERAGE DAYS ON THE MARKET**

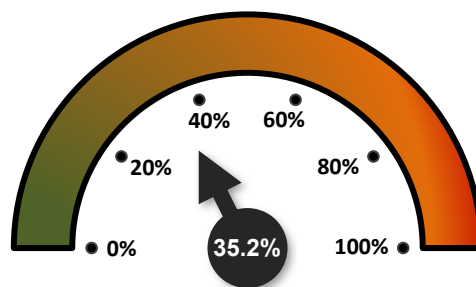


**SALES-TO-NEW LISTINGS RATIO**



↑ FROM 54.8% IN MARCH 2023  
↓ FROM 62.2% IN APRIL 2022

**ODDS OF SELLING IN 90 DAYS OR LESS**

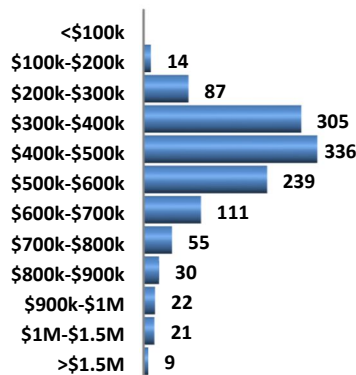


↑ FROM 31.1% IN MARCH 2023  
↓ FROM 51.1% IN APRIL 2022

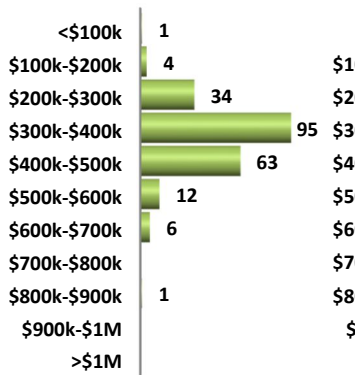
**DETAILS BY PROPERTY TYPE**

	DETACHED	SEMI-DETACHED	ROW / TOWNHOUSES	APARTMENT CONDOS
AVERAGE SOLD PRICE	\$500,635	\$378,797	\$261,390	\$192,560
MEDIAN SOLD PRICE	\$457,500	\$375,000	\$264,000	\$175,000
SOLD PROPERTIES	1,229	216	281	302
SOLD PROPERTIES YTD	3,605	646	893	979
NEW LISTINGS	2,081	371	404	641
SALES-TO-NEW LISTINGS RATIO	59.1%	58.2%	69.6%	47.1%
AVERAGED DAYS ON THE MARKET	42	41	45	56

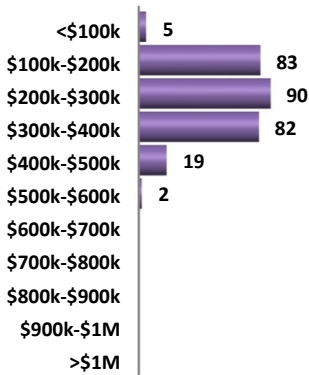
**DETACHED HOMES  
SOLD BY PRICE RANGE**



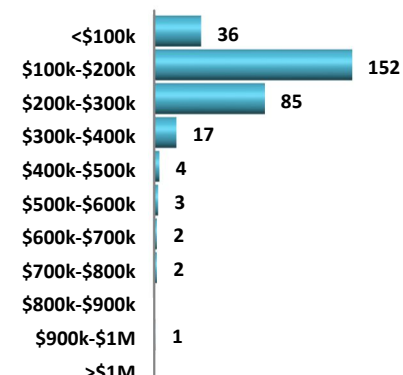
**SEMI-DETACHED HOMES  
SOLD BY PRICE RANGE**



**ROW / TOWNHOUSES  
SOLD BY PRICE RANGE**



**APARTMENT CONDOMINIUMS  
SOLD BY PRICE RANGE**



**AVERAGE SOLD PRICES OVER 2 YEARS**

