

\$429,900 - 149 Pierwyck Loop, Spruce Grove

MLS® #E4460784

\$429,900

3 Bedroom, 3.00 Bathroom, 1,719 sqft

Single Family on 0.00 Acres

Fenwyck, Spruce Grove, AB

Welcome to this beautifully designed 1719 sq. ft. half duplex in the desirable community of Fenwyck, Spruce Grove – built with care and quality by Victory Homes. Featuring a double attached garage and extended driveway for added convenience. The main floor includes a versatile den and full bathroom, perfect for guests or a home office. The open-concept design showcases a striking open-to-above living room with an electric fireplace and large windows that bring in plenty of natural light. The kitchen offers a central island, ceiling-height cabinets, and sleek quartz countertops. Upstairs, enjoy the flexibility of a spacious bonus room – great for relaxing or entertainment. The primary suite features a 5-piece ensuite with double sinks, a tiled shower, separate tub, and walk-in closet. Two additional bedrooms, a 3-piece bathroom, and laundry complete the upper floor. With a separate side entrance to the basement and backing onto green space, this home is close to trails, schools, and everyday amenities.

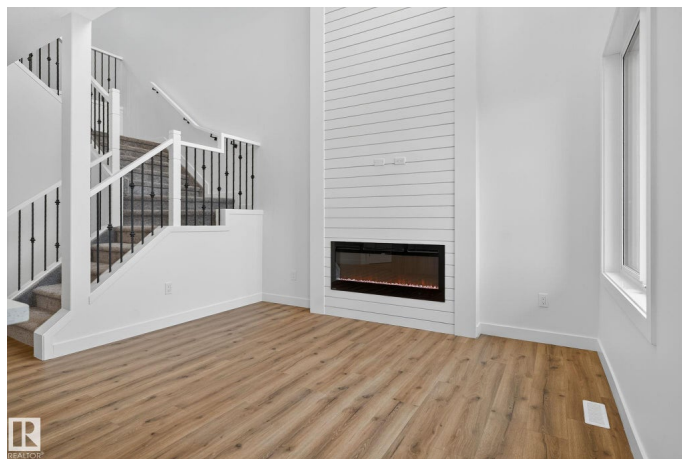
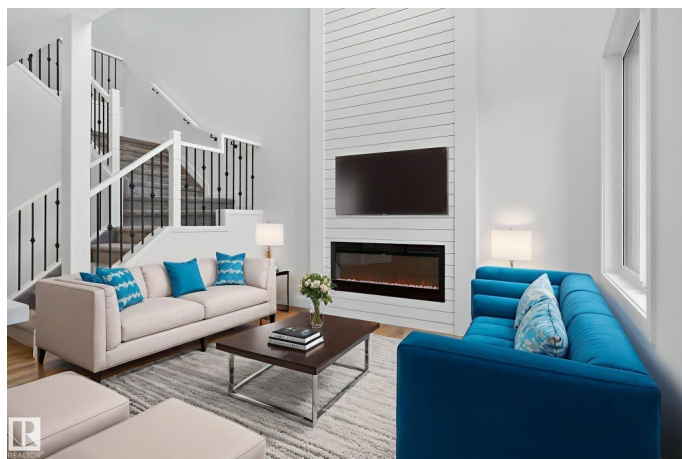
Built in 2025

Essential Information

MLS® # E4460784

Price \$429,900

Bedrooms 3



Bathrooms	3.00
Full Baths	3
Square Footage	1,719
Acres	0.00
Year Built	2025
Type	Single Family
Sub-Type	Half Duplex
Style	2 Storey
Status	Active

Community Information

Address	149 Pierwyck Loop
Area	Spruce Grove
Subdivision	Fenwyck
City	Spruce Grove
County	ALBERTA
Province	AB
Postal Code	T7X 4G3

Amenities

Amenities	Ceiling 9 ft., Closet Organizers
Parking	Double Garage Attached

Interior

Interior Features	ensuite bathroom
Appliances	Garage Control, Garage Opener, Hood Fan
Heating	Forced Air-1, Natural Gas
Fireplace	Yes
Fireplaces	Remote Control
Stories	2
Has Basement	Yes
Basement	Full, Unfinished

Exterior

Exterior	Wood, Stone, Vinyl
Exterior Features	Airport Nearby, Backs Onto Park/Trees, Golf Nearby, Playground Nearby, Public Transportation, Schools, Shopping Nearby
Roof	Asphalt Shingles
Construction	Wood, Stone, Vinyl

Foundation Concrete Perimeter

Additional Information

Date Listed October 3rd, 2025

Days on Market 10

Zoning Zone 91

DATA IS DEEMED RELIABLE BUT IS NOT GUARANTEED ACCURATE BY THE REALTORS® ASSOCIATION OF EDMONTON. COPYRIGHT 2025 BY THE REALTORS® ASSOCIATION OF EDMONTON. ALL RIGHTS RESERVED.Trademarks are owned or controlled by the Canadian Real Estate Association (CREA) and identify real estate professionals who are members of CREA (REALTOR®, REALTORS®) and/or the quality of services they provide (MLS®, Multiple Listing Service®)

Listing information last updated on October 13th, 2025 at 1:02am MDT