

Courtesy Of Morgan A Moen Of RE/MAX Real Estate

\$419,900 - 18 Glamorgan Drive, Sherwood Park

MLS® #E4457654

\$419,900

4 Bedroom, 2.50 Bathroom, 1,157 sqft
Single Family on 0.00 Acres

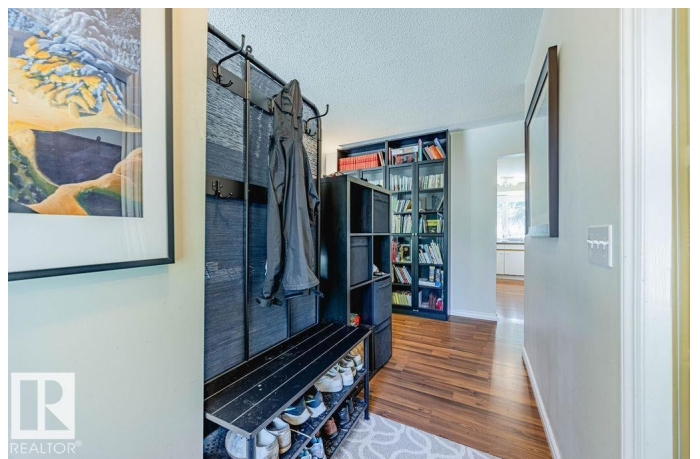
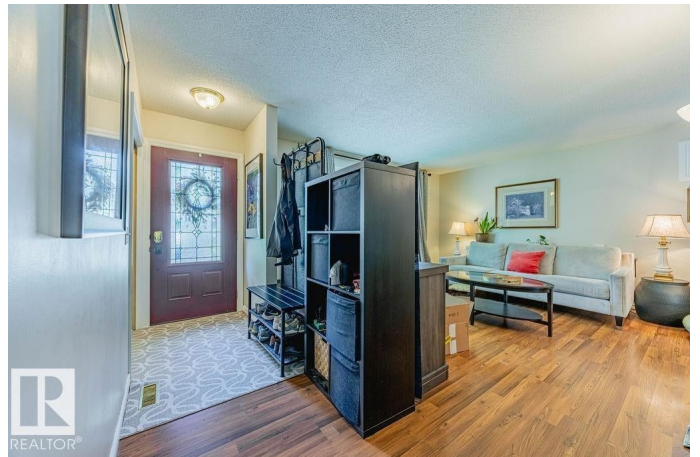
Glen Allan, Sherwood Park, AB

Welcome to Glen Allan. This 1,076 square foot 3+1 bedroom bungalow has been updated and is a great family home. Featuring a bright and sunny living room, formal dining room, kitchen with eat-at peninsula lots of cabinetry, large primary bedroom with doors to the back yard and a two-piece ensuite, four piece main bathroom, and two additional bedrooms. The fully finished basement has a large family room and big fourth bedroom, three piece bathroom, as well as a good size laundry and storage room. Situated on a 55;x120â€™™ lot the massive back yard has a large storage shed as well as tons of room for gardening or for your family to enjoy the gorgeous summers outside. Other features include laminate and lino flooring, newer windows, vinyl plank flooring in the basement, central A/C updated furnace hwt and shingles, and a front parking pad. Close to schools, public transportation, and walking distance from the mall.

Built in 1972

Essential Information

MLS® #	E4457654
Price	\$419,900
Bedrooms	4
Bathrooms	2.50
Full Baths	2



Half Baths	1
Square Footage	1,157
Acres	0.00
Year Built	1972
Type	Single Family
Sub-Type	Detached Single Family
Style	Bungalow
Status	Active

Community Information

Address	18 Glamorgan Drive
Area	Sherwood Park
Subdivision	Glen Allan
City	Sherwood Park
County	ALBERTA
Province	AB
Postal Code	T8A 2Y4

Amenities

Amenities	On Street Parking, Vinyl Windows, See Remarks
Parking	Parking Pad Cement/Paved

Interior

Interior Features	ensuite bathroom
Appliances	Dishwasher-Built-In, Dryer, Refrigerator, Storage Shed, Stove-Electric, Washer, Window Coverings
Heating	Forced Air-1, Natural Gas
Stories	2
Has Basement	Yes
Basement	Full, Finished

Exterior

Exterior	Wood, Vinyl
Exterior Features	Fenced, Landscaped, No Back Lane, Schools, Shopping Nearby
Roof	Asphalt Shingles
Construction	Wood, Vinyl
Foundation	Concrete Perimeter

Additional Information

Date Listed September 12th, 2025

Days on Market 3

Zoning Zone 25

DATA IS DEEMED RELIABLE BUT IS NOT GUARANTEED ACCURATE BY THE REALTORS® ASSOCIATION OF EDMONTON. COPYRIGHT 2025 BY THE REALTORS® ASSOCIATION OF EDMONTON. ALL RIGHTS RESERVED. Trademarks are owned or controlled by the Canadian Real Estate Association (CREA) and identify real estate professionals who are members of CREA (REALTOR®, REALTORS®) and/or the quality of services they provide (MLS®, Multiple Listing Service®)

Listing information last updated on September 15th, 2025 at 7:17am MDT