

\$649,900 - 2312 Hagen Link, Edmonton

MLS® #E4452233

\$649,900

4 Bedroom, 3.50 Bathroom, 2,215 sqft

Single Family on 0.00 Acres

Haddow, Edmonton, AB

Absolutely stunning home backing onto a park. Features a complete basement renovation (2024) including a new furnace and on-demand hot water tank. The main floor offers a generous living room with gas fireplace, TV wall mount with hidden connections, central air conditioning, and hardwood floors. Additional features include new 2nd floor carpet (2025), a maple kitchen with high-end appliances, granite counters, a corner pantry, and an eating area overlooking the backyard and park. The property also includes a lawn and garden irrigation system (front & back) and a heated garage with a new door and opener (2024), floor drain and electric vehicle plug. Enjoy the location â€“ walk out the back gate to the community centre, community garden, multi-use outdoor rink, playground, walking paths, and sports fields. Easy access to Anthony Henday Drive and Currents of Windermere shopping centre. Minutes away from Terwillegar Rec Centre, the high school, and the Leger Transit Centre.

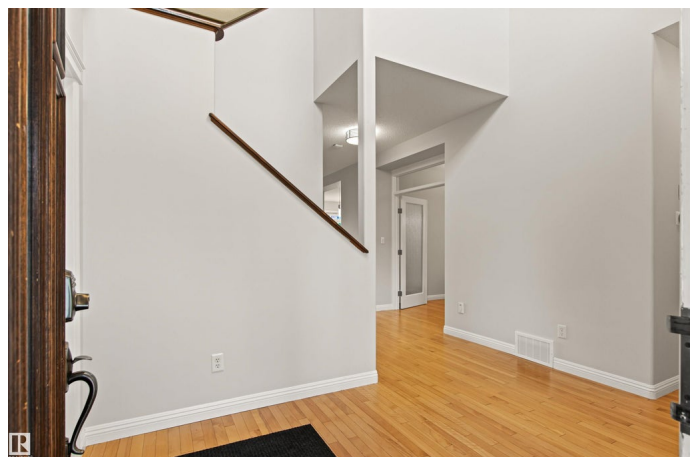
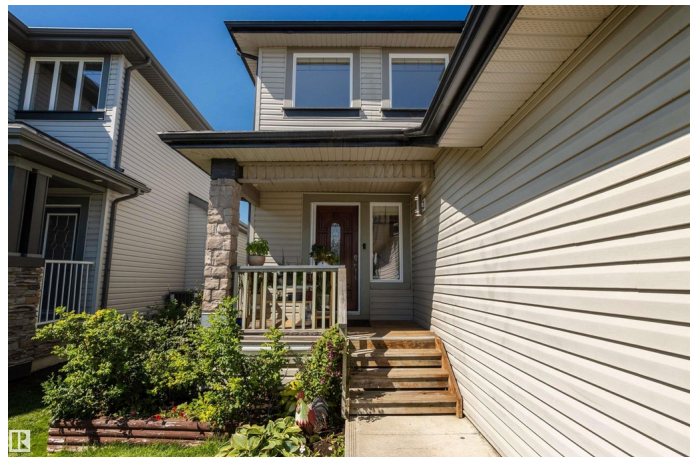
Built in 2006

Essential Information

MLS® # E4452233

Price \$649,900

Bedrooms 4



Bathrooms	3.50
Full Baths	3
Half Baths	1
Square Footage	2,215
Acres	0.00
Year Built	2006
Type	Single Family
Sub-Type	Detached Single Family
Style	2 Storey
Status	Active

Community Information

Address	2312 Hagen Link
Area	Edmonton
Subdivision	Haddow
City	Edmonton
County	ALBERTA
Province	AB
Postal Code	T6R 3M6

Amenities

Amenities	Air Conditioner, Deck
Parking	Double Garage Attached

Interior

Interior Features	ensuite bathroom
Appliances	Air Conditioning-Central, Alarm/Security System, Dishwasher-Built-In, Dryer, Garage Opener, Hood Fan, Oven-Microwave, Refrigerator, Storage Shed, Stove-Gas, Vacuum System Attachments, Washer, Window Coverings, TV Wall Mount, Garage Heater
Heating	Forced Air-1, Natural Gas
Fireplace	Yes
Fireplaces	Corner
Stories	3
Has Basement	Yes
Basement	Full, Finished

Exterior

Exterior	Wood, Stone, Vinyl
----------	--------------------

Exterior Features	Backs Onto Park/Trees, Fenced, Playground Nearby, Public Transportation, Schools, Shopping Nearby
Roof	Asphalt Shingles
Construction	Wood, Stone, Vinyl
Foundation	Concrete Perimeter

School Information

Elementary	Brookside
Middle	Riverbend
High	Lilian Osbourne

Additional Information

Date Listed	August 9th, 2025
Days on Market	3
Zoning	Zone 14

DATA IS DEEMED RELIABLE BUT IS NOT GUARANTEED ACCURATE BY THE REALTORS® ASSOCIATION OF EDMONTON. COPYRIGHT 2025 BY THE REALTORS® ASSOCIATION OF EDMONTON. ALL RIGHTS RESERVED.Trademarks are owned or controlled by the Canadian Real Estate Association (CREA) and identify real estate professionals who are members of CREA (REALTOR®, REALTORS®) and/or the quality of services they provide (MLS®, Multiple Listing Service®)

Listing information last updated on August 12th, 2025 at 8:32am MDT