

\$500,000 - 20628 92 Avenue, Edmonton

MLS® #E4451692

\$500,000

3 Bedroom, 2.50 Bathroom, 1,474 sqft

Single Family on 0.00 Acres

Suder Greens, Edmonton, AB

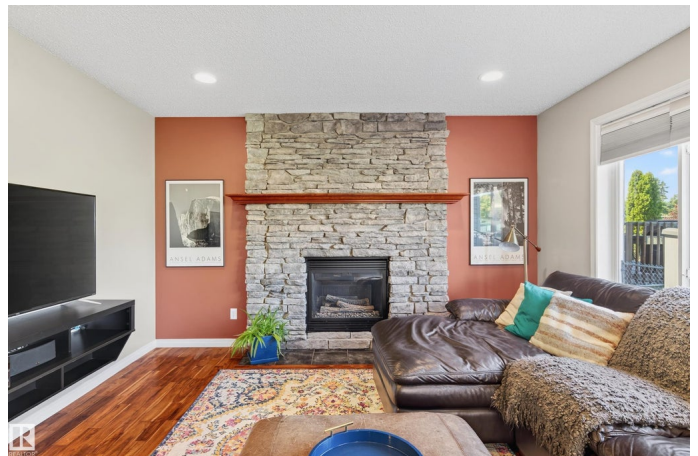
Your Fairway Retreat - Set on a quiet cul-de-sac and backing onto the 8th hole of Lewis Estates Golf Course, this 2-storey home offers a rare opportunity to enjoy both privacy and an incredible view. Inside, the thoughtful layout makes the most of every space, creating a warm and welcoming flow for everyday living and entertaining. Rich hardwood flooring throughout adds timeless character and an inviting sense of continuity. A custom stone fireplace serves as the heart of the living room, while large windows draw in natural light and showcase the serene surroundings. The unspoiled basement is ready for your personal touch, offering the flexibility to design the space your lifestyle needs. Outside, the aggregate driveway, mature landscaping, and golf course backdrop provide a setting that is as beautiful as it is enduring. If you've been looking for a home that balances timeless design with a truly special location, this is the one. New shingles and Air conditioning in 2021 and 2022, respectively.

Built in 2007

Essential Information

MLS® # E4451692

Price \$500,000



Bedrooms	3
Bathrooms	2.50
Full Baths	2
Half Baths	1
Square Footage	1,474
Acres	0.00
Year Built	2007
Type	Single Family
Sub-Type	Detached Single Family
Style	2 Storey
Status	Active

Community Information

Address	20628 92 Avenue
Area	Edmonton
Subdivision	Suder Greens
City	Edmonton
County	ALBERTA
Province	AB
Postal Code	T5T 1S9

Amenities

Amenities	Air Conditioner, Carbon Monoxide Detectors, Deck
Parking	Double Garage Attached

Interior

Interior Features	ensuite bathroom
Appliances	Dishwasher-Built-In, Dryer, Microwave Hood Fan, Refrigerator, Stove-Gas, Washer
Heating	Forced Air-1, Natural Gas
Fireplaces	Masonry
Stories	2
Has Basement	Yes
Basement	Full, Unfinished

Exterior

Exterior	Wood, Vinyl
Exterior Features	Backs Onto Park/Trees, Cul-De-Sac, Fenced, Golf Nearby, Landscaped, Schools, Shopping Nearby

Roof	Asphalt Shingles
Construction	Wood, Vinyl
Foundation	Concrete Perimeter

School Information

Elementary	Winterburn School
Middle	Michael Phair School
High	Jasper Place School

Additional Information

Date Listed	August 7th, 2025
Days on Market	1
Zoning	Zone 58

DATA IS DEEMED RELIABLE BUT IS NOT GUARANTEED ACCURATE BY THE REALTORS® ASSOCIATION OF EDMONTON. COPYRIGHT 2025 BY THE REALTORS® ASSOCIATION OF EDMONTON. ALL RIGHTS RESERVED. Trademarks are owned or controlled by the Canadian Real Estate Association (CREA) and identify real estate professionals who are members of CREA (REALTOR®, REALTORS®) and/or the quality of services they provide (MLS®, Multiple Listing Service®)

Listing information last updated on August 8th, 2025 at 5:47am MDT