

## \$200,000 - 13027 66 Street, Edmonton

MLS® #E4451553

**\$200,000**

2 Bedroom, 0.50 Bathroom, 617 sqft

Single Family on 0.00 Acres

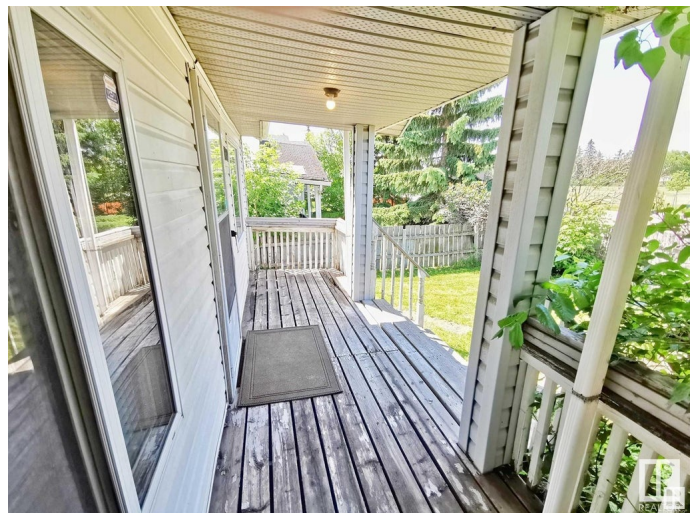
Belvedere, Edmonton, AB

This 2-bedroom, 1-bathroom home is packed with value for someone ready to roll up their sleeves. It comes with a single detached garage, three outdoor parking spots, and tons of street parking right out front. Major updates have already been taken care of â€” including a new hot water tank (Nov 2019), new furnace (2021), and a new roof (Oct 2022). The home also features a 100 AMP electrical panel and a crawl space for extra storage. Sitting on a big lot with a generous yard, this property is located right in front of a park and just steps from Balwin School. Itâ€™s ideal for investors, renovators, or buyers looking to build equity with some sweat equity. No condo fees and loads of potential â€” donâ€™t miss this opportunity!

Built in 1933

### Essential Information

MLS® #	E4451553
Price	\$200,000
Bedrooms	2
Bathrooms	0.50
Half Baths	1
Square Footage	617
Acres	0.00
Year Built	1933



Type	Single Family
Sub-Type	Detached Single Family
Style	Bungalow
Status	Active

### Community Information

Address	13027 66 Street
Area	Edmonton
Subdivision	Belvedere
City	Edmonton
County	ALBERTA
Province	AB
Postal Code	T5C 0A7

### Amenities

Amenities	Crawl Space
Parking	Single Garage Detached

### Interior

Appliances	Dryer, Garage Control, Garage Opener, Refrigerator, Stove-Electric, Washer
Heating	Forced Air-1, Natural Gas
Stories	1
Has Basement	Yes
Basement	See Remarks, No Basement

### Exterior

Exterior	Wood, Vinyl
Exterior Features	Back Lane, Fenced, Flat Site, Landscaped, Playground Nearby, Public Swimming Pool, Public Transportation, Schools, Shopping Nearby, See Remarks
Roof	Asphalt Shingles
Construction	Wood, Vinyl
Foundation	Concrete Perimeter

### Additional Information

Date Listed	August 7th, 2025
Days on Market	1
Zoning	Zone 02

DATA IS DEEMED RELIABLE BUT IS NOT GUARANTEED ACCURATE BY THE REALTORS® ASSOCIATION OF EDMONTON. COPYRIGHT 2025 BY THE REALTORS® ASSOCIATION OF EDMONTON. ALL RIGHTS RESERVED.Trademarks are owned or controlled by the Canadian Real Estate Association (CREA) and identify real estate professionals who are members of CREA (REALTOR®, REALTORS®) and/or the quality of services they provide (MLS®, Multiple Listing Service®)

Listing information last updated on August 8th, 2025 at 2:33pm MDT