

\$400,000 - 10238 103 Street, Edmonton

MLS® #E4450957

\$400,000

2 Bedroom, 2.00 Bathroom, 828 sqft

Condo / Townhouse on 0.00 Acres

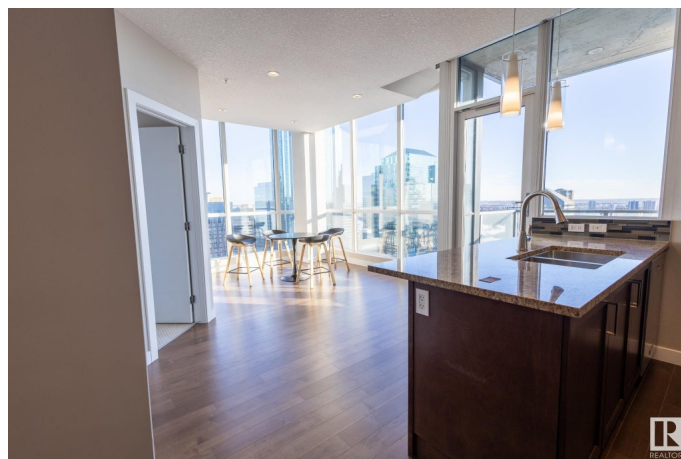
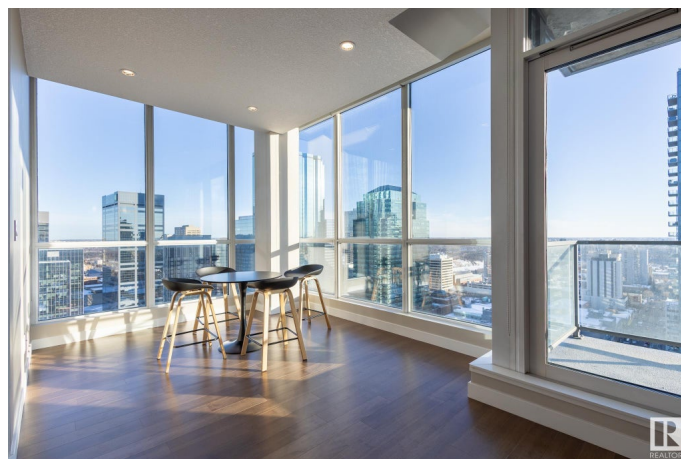
Downtown (Edmonton), Edmonton, AB

Welcome to the Ultima Tower, where upscale living meets unbeatable location in the heart of downtown Edmonton. This immaculate 2-bedroom, 2-bath condo is located on a high floor and offers sweeping city views along with a bright, modern layout that has been exceptionally well maintained. A rare and valuable feature, this unit comes with two underground parking stalls and a secure storage locker. Residents enjoy premium amenities including a fully equipped fitness centre, a gorgeous rooftop terrace with hot tub and lounge, and concierge service. Step outside and you're just minutes from Rogers Place, the Ice District, excellent restaurants, coffee shops, and vibrant nightlife. Whether you're a professional looking for stylish urban living or an investor seeking a premium downtown property, this condo checks all the boxes. Youâ€™ll love the energy of the area, the comfort of the space, and the ease of life at Ultima.

Built in 2016

Essential Information

MLS® #	E4450957
Price	\$400,000
Bedrooms	2
Bathrooms	2.00



Full Baths	2
Square Footage	828
Acres	0.00
Year Built	2016
Type	Condo / Townhouse
Sub-Type	Apartment High Rise
Style	Single Level Apartment
Status	Active

Community Information

Address	10238 103 Street
Area	Edmonton
Subdivision	Downtown (Edmonton)
City	Edmonton
County	ALBERTA
Province	AB
Postal Code	T5J 0G6

Amenities

Amenities	Air Conditioner, Deck, Exercise Room, No Animal Home, No Smoking Home, Secured Parking, Social Rooms, Storage-Locker Room, Concierge Service
Parking Spaces	2
Parking	Underground

Interior

Interior Features	ensuite bathroom
Appliances	Dishwasher-Built-In, Dryer, Garage Control, Garage Opener, Microwave Hood Fan, Refrigerator, Stove-Electric
Heating	Heat Pump, Natural Gas
# of Stories	32
Stories	1
Has Basement	Yes
Basement	None, No Basement

Exterior

Exterior	Concrete, Brick, Metal
Exterior Features	Golf Nearby, Public Swimming Pool, Public Transportation, River Valley View, Schools, Shopping Nearby, View City, View Downtown

Roof	EPDM Membrane
Construction	Concrete, Brick, Metal
Foundation	Concrete Perimeter

Additional Information

Date Listed	August 1st, 2025
Days on Market	1
Zoning	Zone 12
Condo Fee	\$606

DATA IS DEEMED RELIABLE BUT IS NOT GUARANTEED ACCURATE BY THE REALTORS® ASSOCIATION OF EDMONTON. COPYRIGHT 2025 BY THE REALTORS® ASSOCIATION OF EDMONTON. ALL RIGHTS RESERVED.Trademarks are owned or controlled by the Canadian Real Estate Association (CREA) and identify real estate professionals who are members of CREA (REALTOR®, REALTORS®) and/or the quality of services they provide (MLS®, Multiple Listing Service®)

Listing information last updated on August 2nd, 2025 at 3:02pm MDT