

Courtesy Of Dustin Batuik Of Sterling Real Estate

\$94,900 - 102 8314 110 Avenue, Edmonton

MLS® #E4450677

\$94,900

1 Bedroom, 0.50 Bathroom, 590 sqft

Condo / Townhouse on 0.00 Acres

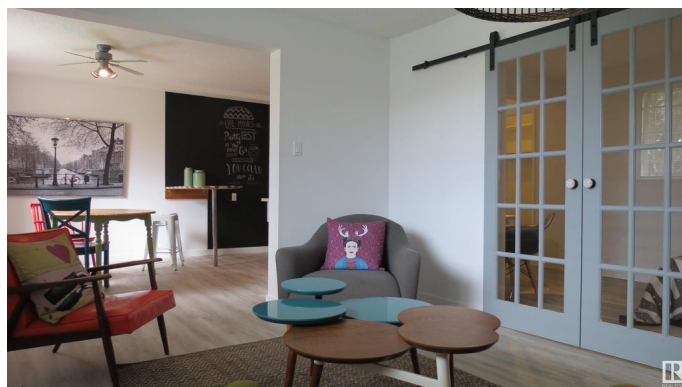
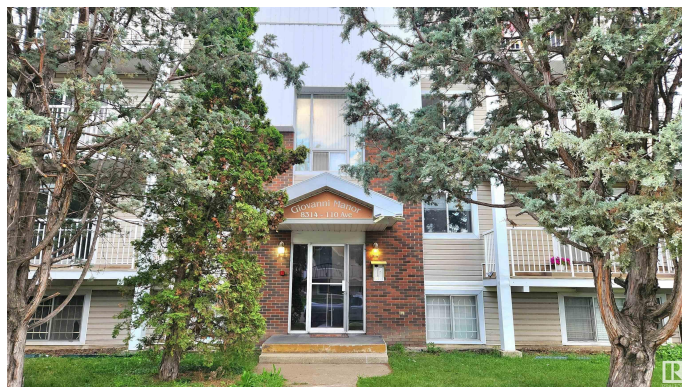
Cromdale, Edmonton, AB

Stylish & Chic Unit that's walking Distance to One of the BEST VIEWS & Walking Paths of Edmonton's River Valley. A Stone Throw away also from the Ultra Trendy Area of "Lewis Block at Stadium Yards" which has trendy stores, restaurant's & much more! In the kitchen you will find plenty of cabinet space, upgraded appliances, a wooden peninsula for extra counter space & a Chalk Board wall to write your Menu's, Grocery List or Whatever your daily message is! French Doors lead to your Lovely Bedroom with a walk in closet & an updated bathroom. The Low Condo Fee of \$250 per month, which includes "Heat & Water," is affordable living in a Great Building. Perfect for a First Time Buyer or an Investor. Other units in the building are also accessible for sale if you wish!

Built in 1973

Essential Information

MLS® #	E4450677
Price	\$94,900
Bedrooms	1
Bathrooms	0.50
Half Baths	1
Square Footage	590
Acres	0.00
Year Built	1973



Type	Condo / Townhouse
Sub-Type	Lowrise Apartment
Style	Single Level Apartment
Status	Active

Community Information

Address	102 8314 110 Avenue
Area	Edmonton
Subdivision	Cromdale
City	Edmonton
County	ALBERTA
Province	AB
Postal Code	T5H 3Z6

Amenities

Amenities	No Smoking Home
Parking Spaces	1
Parking	Stall

Interior

Appliances	Hood Fan, Refrigerator, Stove-Electric, Window Coverings
Heating	Baseboard, Natural Gas
# of Stories	1
Stories	1
Has Basement	Yes
Basement	None, No Basement

Exterior

Exterior	Wood, Brick, Vinyl
Exterior Features	Golf Nearby, Playground Nearby, Public Transportation, Schools, Shopping Nearby
Roof	Asphalt Shingles
Construction	Wood, Brick, Vinyl
Foundation	Concrete Perimeter

Additional Information

Date Listed	July 28th, 2025
Days on Market	5
Zoning	Zone 09

Condo Fee \$250

DATA IS DEEMED RELIABLE BUT IS NOT GUARANTEED ACCURATE BY THE REALTORS® ASSOCIATION OF EDMONTON. COPYRIGHT 2025 BY THE REALTORS® ASSOCIATION OF EDMONTON. ALL RIGHTS RESERVED.Trademarks are owned or controlled by the Canadian Real Estate Association (CREA) and identify real estate professionals who are members of CREA (REALTOR®, REALTORS®) and/or the quality of services they provide (MLS®, Multiple Listing Service®)

Listing information last updated on August 2nd, 2025 at 8:17am MDT