

\$649,900 - 3266 Dallas Schmidt Drive, Edmonton

MLS® #E4449775

\$649,900

3 Bedroom, 2.50 Bathroom, 1,840 sqft
Single Family on 0.00 Acres

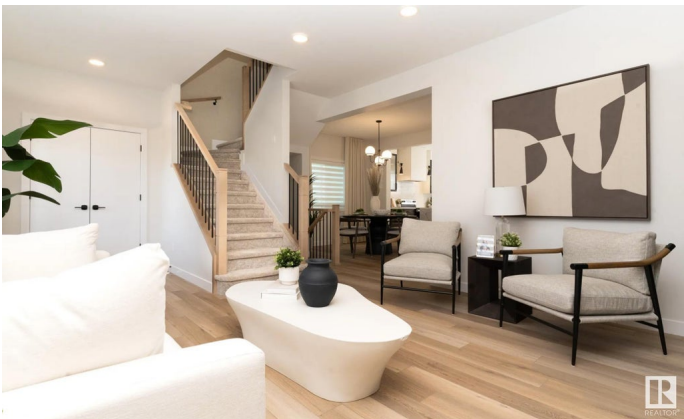
Griesbach, Edmonton, AB

Welcome to the Canyon – a beautifully designed home in the Village at Griesbach. This home features side entry, 3 spacious bedrooms, 2.5 bathrooms, and the convenience of One & Done Pricing, with landscaping, a detached garage, and fencing included. Inside, you'll find a versatile flex room on the main floor and a modern L-shaped kitchen perfect for entertaining. Upstairs, enjoy the inviting bonus room for relaxation, surrounded by serene bedrooms. The Canyon is a home that adapts to your lifestyle, offering comfort, convenience, and a space where memories are made. Photos are of a showhome

Built in 2025

Essential Information

| | |
|----------------|---------------|
| MLS® # | E4449775 |
| Price | \$649,900 |
| Bedrooms | 3 |
| Bathrooms | 2.50 |
| Full Baths | 2 |
| Half Baths | 1 |
| Square Footage | 1,840 |
| Acres | 0.00 |
| Year Built | 2025 |
| Type | Single Family |



| | |
|----------|------------------------|
| Sub-Type | Detached Single Family |
| Style | 2 Storey |
| Status | Active |

Community Information

| | |
|-------------|---------------------------|
| Address | 3266 Dallas Schmidt Drive |
| Area | Edmonton |
| Subdivision | Griesbach |
| City | Edmonton |
| County | ALBERTA |
| Province | AB |
| Postal Code | T5E 6Z8 |

Amenities

| | |
|-----------|---|
| Amenities | Carbon Monoxide Detectors, Deck, Detectors Smoke, Hot Water Tankless, Smart/Program. Thermostat, HRV System |
| Parking | Double Garage Detached |

Interior

| | |
|-------------------|--|
| Interior Features | ensuite bathroom |
| Appliances | Dishwasher-Built-In, Garage Control, Garage Opener, Refrigerator, Stacked Washer/Dryer, Stove-Electric |
| Heating | Forced Air-1, Natural Gas |
| Fireplace | Yes |
| Fireplaces | Insert |
| Stories | 2 |
| Has Basement | Yes |
| Basement | Full, Unfinished |

Exterior

| | |
|-------------------|--|
| Exterior | Prefab, Vinyl |
| Exterior Features | Back Lane, Fenced, Golf Nearby, Landscaped, Playground Nearby, Public Transportation, Schools, Shopping Nearby |
| Roof | Asphalt Shingles |
| Construction | Prefab, Vinyl |
| Foundation | Concrete Perimeter |

School Information

| | |
|------------|-------------------------|
| Elementary | MAJOR-GENERAL GRIESBACH |
| Middle | St. Edmund |

High QUEEN ELIZABETH

Additional Information

Date Listed July 23rd, 2025
Days on Market 5
Zoning Zone 27

DATA IS DEEMED RELIABLE BUT IS NOT GUARANTEED ACCURATE BY THE REALTORS® ASSOCIATION OF EDMONTON. COPYRIGHT 2025 BY THE REALTORS® ASSOCIATION OF EDMONTON. ALL RIGHTS RESERVED.Trademarks are owned or controlled by the Canadian Real Estate Association (CREA) and identify real estate professionals who are members of CREA (REALTOR®, REALTORS®) and/or the quality of services they provide (MLS®, Multiple Listing Service®)
Listing information last updated on July 28th, 2025 at 2:03pm MDT