

Courtesy Of Carlos Lundy Of Exp Realty

\$579,000 - 4960 191 Street, Edmonton

MLS® #E4449310

\$579,000

4 Bedroom, 3.50 Bathroom, 1,941 sqft
Single Family on 0.00 Acres

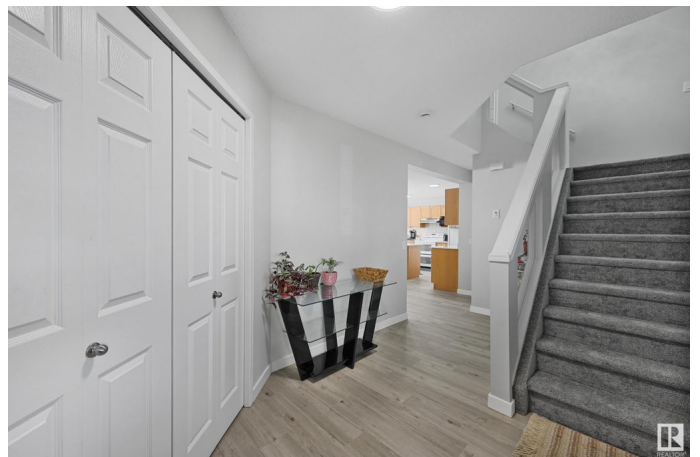
Jamieson Place, Edmonton, AB

Welcome to Jamieson Place! This updated 2-storey home has 1940 sq. ft. and backs onto a green space with no neighbors behind. Inside, you'll find a spacious entry, fresh paint, new lighting, carpet, and vinyl plank flooring on the main level. The kitchen features newer quartz counters, a double oven stove, and a huge pantry. The dining area overlooks the yard, and the living room has a cozy fireplace perfect for relaxing evenings. There's a convenient half bath and main floor laundry too. Upstairs, a bright bonus room with built-in window seating is great for reading or chilling. You'll also find 3 bedrooms, including a large primary with a walk-in closet, make-up vanity, and jetted tub. The finished basement adds a 4th bedroom, modern bathroom, lots of storage, and a big rec area. Outside, enjoy a front porch, a deck for BBQs, and a private yard with walking trails nearby. Plus, a double attached garage rounds out this move-in ready home!

Built in 2003

Essential Information

MLS® #	E4449310
Price	\$579,000
Bedrooms	4
Bathrooms	3.50



Full Baths	3
Half Baths	1
Square Footage	1,941
Acres	0.00
Year Built	2003
Type	Single Family
Sub-Type	Detached Single Family
Style	2 Storey
Status	Active

Community Information

Address	4960 191 Street
Area	Edmonton
Subdivision	Jamieson Place
City	Edmonton
County	ALBERTA
Province	AB
Postal Code	T6M 2T8

Amenities

Amenities	Off Street Parking, On Street Parking, Deck, Detectors Smoke, Front Porch, Vaulted Ceiling
Parking	Double Garage Attached

Interior

Interior Features	ensuite bathroom
Appliances	Dishwasher-Built-In, Dryer, Hood Fan, Refrigerator, Stove-Electric, Washer
Heating	Forced Air-1, Natural Gas
Stories	3
Has Basement	Yes
Basement	Full, Finished

Exterior

Exterior	Wood, Vinyl
Exterior Features	Backs Onto Park/Trees, Fenced, Flat Site, Landscaped, Level Land, No Back Lane, View City, See Remarks
Roof	Asphalt Shingles
Construction	Wood, Vinyl

Foundation Concrete Perimeter

Additional Information

Date Listed July 24th, 2025

Days on Market 91

Zoning Zone 20

DATA IS DEEMED RELIABLE BUT IS NOT GUARANTEED ACCURATE BY THE REALTORS® ASSOCIATION OF EDMONTON. COPYRIGHT 2025 BY THE REALTORS® ASSOCIATION OF EDMONTON. ALL RIGHTS RESERVED. Trademarks are owned or controlled by the Canadian Real Estate Association (CREA) and identify real estate professionals who are members of CREA (REALTOR®, REALTORS®) and/or the quality of services they provide (MLS®, Multiple Listing Service®)

Listing information last updated on October 23rd, 2025 at 4:32pm MDT