

## **\$374,900 - 4788 Terwillegar Common, Edmonton**

MLS® #E4447330

**\$374,900**

3 Bedroom, 2.50 Bathroom, 1,353 sqft

Single Family on 0.00 Acres

Terwillegar Towne, Edmonton, AB

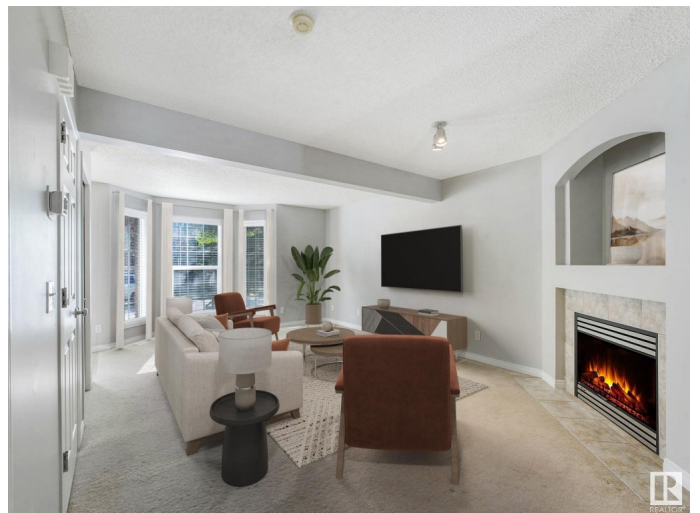
BEAUTIFUL & CLEAN townhouse in Terwillegar Towne for UNDER \$375,000 WITH NO CONDO FEES! Offering over 1,350 sqft of living space, the main floor captures an open living/kitchen/dining area with upgraded appliances (fridge/stove- 2023, dishwasher 2019), cozy fireplace, loads of cabinetry & large windows providing plenty of natural light. A half bathroom and laundry complete the main floor. Upstairs boasts a spacious primary suite with a full walk-in closet & 4pc bath. An additional 2 bedrooms, full bath & linen closet complete the main floor. The unfinished basement is awaiting your finishing touches & includes roughed-in plumbing for a future bathroom. Enjoy sunsets in your West facing backyard. Lots of space for a future garage development. Easy access to Anthony Henday Drive, Whitemud Freeway, The Currents of Windermere Shops, Riverbend Square. Enjoy walks to Remedy Cafe and other shops in Terwillegar Towne -only 2 blocks away! Don't miss this fabulous opportunity! Welcome home!

Built in 2004

### **Essential Information**

MLS® # E4447330

Price \$374,900



Bedrooms	3
Bathrooms	2.50
Full Baths	2
Half Baths	1
Square Footage	1,353
Acres	0.00
Year Built	2004
Type	Single Family
Sub-Type	Residential Attached
Style	2 Storey
Status	Active

### Community Information

Address	4788 Terwillegar Common
Area	Edmonton
Subdivision	Terwillegar Towne
City	Edmonton
County	ALBERTA
Province	AB
Postal Code	T6R 3H7

### Amenities

Amenities	Air Conditioner, Deck, No Smoking Home, Vinyl Windows
Parking Spaces	4
Parking	Parking Pad Cement/Paved

### Interior

Interior Features	ensuite bathroom
Appliances	Air Conditioning-Central, Dishwasher-Built-In, Dryer, Refrigerator, Stove-Electric, Washer, Window Coverings
Heating	Forced Air-1, Natural Gas
Fireplace	Yes
Fireplaces	Insert
Stories	2
Has Basement	Yes
Basement	Full, Unfinished

### Exterior

Exterior	Wood, Brick, Vinyl
----------	--------------------

Exterior Features	Back Lane, Fenced, Landscaped, Playground Nearby, Schools, Shopping Nearby
Roof	Asphalt Shingles
Construction	Wood, Brick, Vinyl
Foundation	Concrete Perimeter

### School Information

Elementary	Esther Starkman School
Middle	Archbishop Joseph Macneil
High	Lillian Osborne, St. FX

### Additional Information

Date Listed	July 11th, 2025
Days on Market	12
Zoning	Zone 14
HOA Fees	138
HOA Fees Freq.	Annually

DATA IS DEEMED RELIABLE BUT IS NOT GUARANTEED ACCURATE BY THE REALTORS® ASSOCIATION OF EDMONTON. COPYRIGHT 2025 BY THE REALTORS® ASSOCIATION OF EDMONTON. ALL RIGHTS RESERVED. Trademarks are owned or controlled by the Canadian Real Estate Association (CREA) and identify real estate professionals who are members of CREA (REALTOR®, REALTORS®) and/or the quality of services they provide (MLS®, Multiple Listing Service®)

Listing information last updated on July 22nd, 2025 at 10:02pm MDT