

## **\$458,800 - 14624 60 Street, Edmonton**

MLS® #E4447225

**\$458,800**

5 Bedroom, 2.00 Bathroom, 1,083 sqft  
Single Family on 0.00 Acres

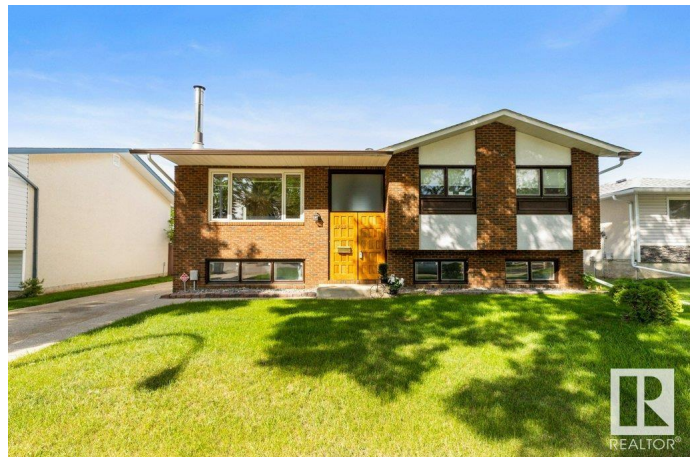
McLeod, Edmonton, AB

Supreme location in McLeod on a cull-d-sac facing a quiet island park! This 3+2 bedroom bi-level home has a modern kitchen open to the living & dining room that overlooks the quiet street. The recently updated kitchen has updated stainless steel appliances & tiled floor. The 3 main floor bedrooms are all well sized. The main floor has hardwood flooring throughout including the bedrooms & there is no carpet in this home! There are two renovated matching 4-piece baths, 1 up and 1 down. The lower level offers a full 2nd kitchen complete with full sized fridge, stove & dishwasher along with a living & dining space. There are two large bedrooms & the laundry mechanical area. The lower level can be directly accessed from outside. The large lot is fully fenced & has a massive deck off the back an ideal spot for the sun worshippers, the oversized double detached garage is finished & heated. Other recent improvements include, shingles, furnace, electrical panel, paint & more! Ideal location close to it all!

Built in 1969

### **Essential Information**

MLS® #	E4447225
Price	\$458,800
Bedrooms	5



Bathrooms	2.00
Full Baths	2
Square Footage	1,083
Acres	0.00
Year Built	1969
Type	Single Family
Sub-Type	Detached Single Family
Style	Bi-Level
Status	Active

### **Community Information**

Address	14624 60 Street
Area	Edmonton
Subdivision	Mcleod
City	Edmonton
County	ALBERTA
Province	AB
Postal Code	T5A 1Z4

### **Amenities**

Amenities	Deck, Walkout Basement
Parking Spaces	4
Parking	Double Garage Detached, Heated, Over Sized

### **Interior**

Appliances	Dryer, Washer, Window Coverings, Refrigerators-Two, Stoves-Two, Dishwasher-Two, Microwave Hood Fan-Two
Heating	Forced Air-1, Natural Gas
Fireplace	Yes
Fireplaces	Stone Facing
Stories	2
Has Basement	Yes
Basement	Full, Finished

### **Exterior**

Exterior	Wood, Brick, Stucco
Exterior Features	Cul-De-Sac, Fenced, Park/Reserve, Playground Nearby, Public Transportation, Schools, Shopping Nearby
Roof	Asphalt Shingles

Construction	Wood, Brick, Stucco
Foundation	Concrete Perimeter

**School Information**

Elementary	McLeod, St. Dominic
Middle	Steele Heights, JJ Bowlen
High	ME Lazerte, Arch. O'Leary

**Additional Information**

Date Listed	July 11th, 2025
Days on Market	7
Zoning	Zone 02

DATA IS DEEMED RELIABLE BUT IS NOT GUARANTEED ACCURATE BY THE REALTORS® ASSOCIATION OF EDMONTON. COPYRIGHT 2025 BY THE REALTORS® ASSOCIATION OF EDMONTON. ALL RIGHTS RESERVED.Trademarks are owned or controlled by the Canadian Real Estate Association (CREA) and identify real estate professionals who are members of CREA (REALTOR®, REALTORS®) and/or the quality of services they provide (MLS®, Multiple Listing Service®)

Listing information last updated on July 18th, 2025 at 8:17am MDT