

\$229,900 - 12 3812 20 Avenue, Edmonton

MLS® #E4445650

\$229,900

4 Bedroom, 2.00 Bathroom, 1,077 sqft

Condo / Townhouse on 0.00 Acres

Daly Grove, Edmonton, AB

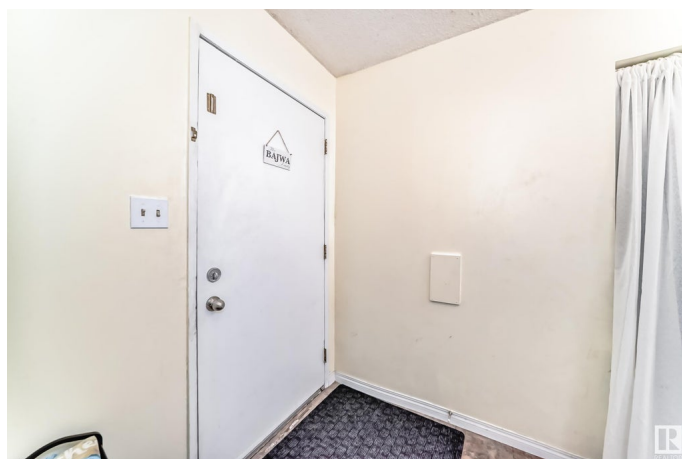
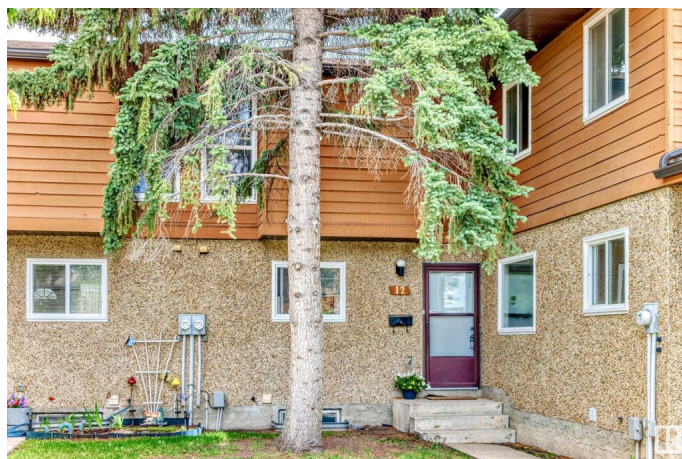
Dream Townhouse Living in Tamarack Park. Discover your perfect home in the vibrant and family-friendly community of Daly Grove. This townhouse offers the ideal blend of comfort, convenience, and a welcoming atmosphere. Step Inside Your Sanctuary. Spacious & Bright: Enjoy an open-concept layout with large windows that flood the main floor with natural light, perfect for entertaining or relaxing. Unleash your inner chef in a well-appointed kitchen. Experience a sense of separation and warmth in the charming sunken living room, ideal for unwinding by the fireplace. Comfortable Bedrooms: Retreat to 3 generous bedrooms upstairs, including a primary suite with 2 closets. Convenient Living: Benefit from 1.5 bathrooms, a separate laundry room, and 2 additional bedrooms in the basement making daily life a breeze. Private Outdoor Space: Enjoy your very own fenced backyard with maintenance free yard, perfect for summer BBQs or a quiet morning coffee. Low Maintenance Living: Enjoy peace of mind with low condo fees.

Built in 1980

Essential Information

MLS® # E4445650

Price \$229,900



Bedrooms	4
Bathrooms	2.00
Full Baths	2
Square Footage	1,077
Acres	0.00
Year Built	1980
Type	Condo / Townhouse
Sub-Type	Townhouse
Style	2 Storey
Status	Active

Community Information

Address	12 3812 20 Avenue
Area	Edmonton
Subdivision	Daly Grove
City	Edmonton
County	ALBERTA
Province	AB
Postal Code	T6L 4B2

Amenities

Amenities	Parking-Visitor
Parking Spaces	1
Parking	Stall

Interior

Appliances	Dishwasher-Built-In, Dryer, Refrigerator, Stove-Electric, Washer
Heating	Forced Air-1, Natural Gas
Fireplace	Yes
Fireplaces	Glass Door, Mantel
Stories	2
Has Basement	Yes
Basement	Full, Partially Finished

Exterior

Exterior	Wood, Stucco
Exterior Features	Fenced, Flat Site, Landscaped, Low Maintenance Landscape, Schools
Roof	Asphalt Shingles
Construction	Wood, Stucco

Foundation Concrete Perimeter

Additional Information

Date Listed July 3rd, 2025
Days on Market 18
Zoning Zone 29
Condo Fee \$266

DATA IS DEEMED RELIABLE BUT IS NOT GUARANTEED ACCURATE BY THE REALTORS® ASSOCIATION OF EDMONTON. COPYRIGHT 2025 BY THE REALTORS® ASSOCIATION OF EDMONTON. ALL RIGHTS RESERVED.Trademarks are owned or controlled by the Canadian Real Estate Association (CREA) and identify real estate professionals who are members of CREA (REALTOR®, REALTORS®) and/or the quality of services they provide (MLS®, Multiple Listing Service®)
Listing information last updated on July 21st, 2025 at 3:18pm MDT