

\$249,000 - 406 10135 Saskatchewan Drive, Edmonton

MLS® #E4445212

\$249,000

2 Bedroom, 1.50 Bathroom, 1,084 sqft

Condo / Townhouse on 0.00 Acres

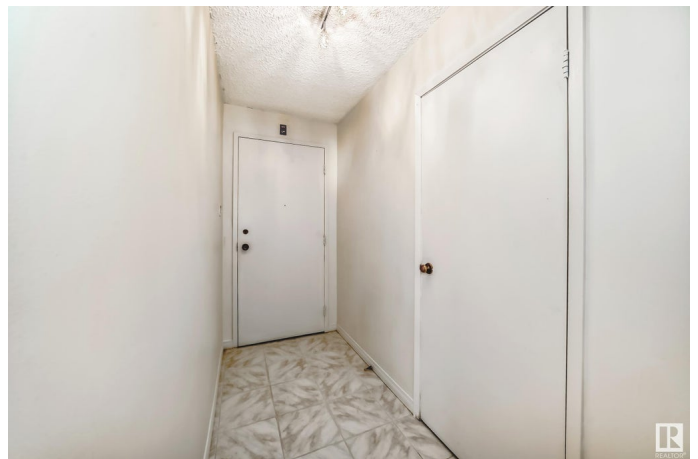
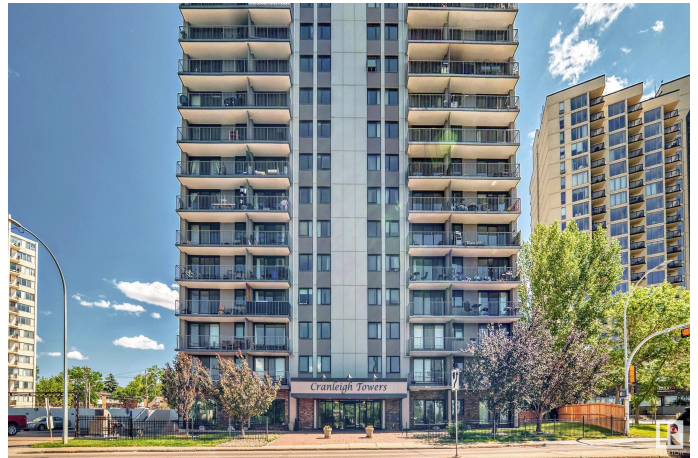
Strathcona, Edmonton, AB

Enjoy stunning river valley and city skyline views from this upgraded 2-bedroom, 2-bath. The open-concept layout perfect for everyday living and entertaining. Step out to a spacious balcony to take in the views. The bright living and dining areas are warm and inviting. The primary bedroom offer a private 2-piece ensuite, while the second bedroom is ideal for guests or a home office. A 4-piece main bath and in-suite laundry add convenience. Includes titled underground parking. Building upgrades include new balcony doors, windows, and fresh exterior paint. Enjoy access to a pool, fitness room, and sauna. Located minutes from the University of Alberta, Whyte Avenue, downtown, and river valley trails—this is the best of city living!

Built in 1973

Essential Information

MLS® #	E4445212
Price	\$249,000
Bedrooms	2
Bathrooms	1.50
Full Baths	1
Half Baths	1
Square Footage	1,084
Acres	0.00



Year Built	1973
Type	Condo / Townhouse
Sub-Type	Apartment High Rise
Style	Single Level Apartment
Status	Active

Community Information

Address	406 10135 Saskatchewan Drive
Area	Edmonton
Subdivision	Strathcona
City	Edmonton
County	ALBERTA
Province	AB
Postal Code	T6E 4Y9

Amenities

Amenities	Exercise Room, Parking-Visitor, Pool-Indoor, Secured Parking, Security Door, Tennis Courts
Parking	Parkade
Has Pool	Yes

Interior

Interior Features	ensuite bathroom
Appliances	Dishwasher-Built-In, Refrigerator, Stove-Electric
Heating	Hot Water, Natural Gas
# of Stories	20
Stories	1
Has Basement	Yes
Basement	None, No Basement

Exterior

Exterior	Steel, Concrete
Exterior Features	Corner Lot, Park/Reserve, Private Setting, Public Transportation, Ravine View, Schools, Shopping Nearby
Roof	Tar & Gravel
Construction	Steel, Concrete
Foundation	Concrete Perimeter

Additional Information

Date Listed	July 1st, 2025
Days on Market	1
Zoning	Zone 15
Condo Fee	\$778

DATA IS DEEMED RELIABLE BUT IS NOT GUARANTEED ACCURATE BY THE REALTORS® ASSOCIATION OF EDMONTON. COPYRIGHT 2025 BY THE REALTORS® ASSOCIATION OF EDMONTON. ALL RIGHTS RESERVED. Trademarks are owned or controlled by the Canadian Real Estate Association (CREA) and identify real estate professionals who are members of CREA (REALTOR®, REALTORS®) and/or the quality of services they provide (MLS®, Multiple Listing Service®)

Listing information last updated on July 2nd, 2025 at 7:47pm MDT