

\$249,900 - 145 1520 Hammond Gate, Edmonton

MLS® #E4444741

\$249,900

2 Bedroom, 2.00 Bathroom, 1,037 sqft

Condo / Townhouse on 0.00 Acres

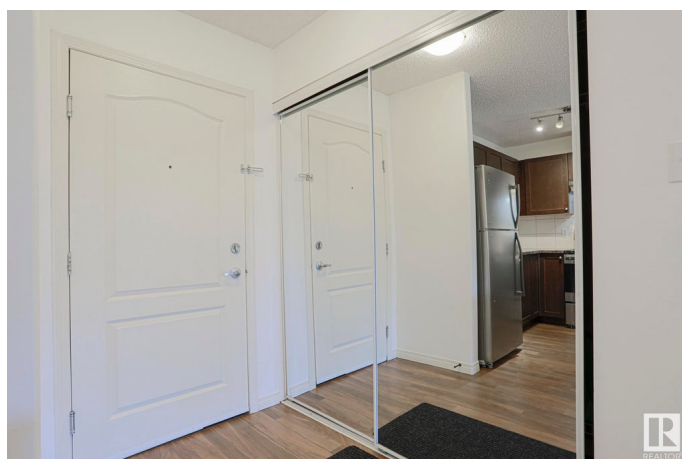
The Hamptons, Edmonton, AB

Welcome to the desired community of the South Hamptons. This 1037 SQFT 2 BED 2 BATH main floor unit is conveniently located right off of the front door with ground floor accessibility. Highlights of this immaculate open concept unit include a massive laundry/storage room, extremely spacious master bedroom with 4 piece ensuite and walk-in closet/den, generously sized secondary bedroom and additional 4 piece bath, patio doors that lead to your nicely sized private balcony, in-floor heating, new fridge & stove. This unit includes 1 titled underground tandem stall for 2 vehicle parking. Perks of the building include a social room, community garden, onsite property management, in-floor heating, heat & water included in condo fee. Close to all amenities and with super easy access to shopping and the Anthony Henday.

Built in 2008

Essential Information

MLS® #	E4444741
Price	\$249,900
Bedrooms	2
Bathrooms	2.00
Full Baths	2
Square Footage	1,037
Acres	0.00



Year Built	2008
Type	Condo / Townhouse
Sub-Type	Lowrise Apartment
Style	Single Level Apartment
Status	Active

Community Information

Address	145 1520 Hammond Gate
Area	Edmonton
Subdivision	The Hamptons
City	Edmonton
County	ALBERTA
Province	AB
Postal Code	T6M 0J4

Amenities

Amenities	Parking-Visitor, Social Rooms
Parking	Tandem, Underground

Interior

Interior Features	ensuite bathroom
Appliances	Dishwasher-Built-In, Dryer, Refrigerator, Stove-Electric, Washer
Heating	In Floor Heat System, Natural Gas
# of Stories	4
Stories	1
Has Basement	Yes
Basement	None, No Basement

Exterior

Exterior	Wood, Brick, Vinyl
Exterior Features	Golf Nearby, Public Transportation, Schools, Shopping Nearby
Roof	Asphalt Shingles
Construction	Wood, Brick, Vinyl
Foundation	Concrete Perimeter

Additional Information

Date Listed	June 27th, 2025
Days on Market	32
Zoning	Zone 58

Condo Fee \$615

DATA IS DEEMED RELIABLE BUT IS NOT GUARANTEED ACCURATE BY THE REALTORS® ASSOCIATION OF EDMONTON. COPYRIGHT 2025 BY THE REALTORS® ASSOCIATION OF EDMONTON. ALL RIGHTS RESERVED.Trademarks are owned or controlled by the Canadian Real Estate Association (CREA) and identify real estate professionals who are members of CREA (REALTOR®, REALTORS®) and/or the quality of services they provide (MLS®, Multiple Listing Service®)

Listing information last updated on July 28th, 2025 at 11:32pm MDT