

## \$234,998 - 32 Encore Crescent, St. Albert

MLS® #E4444453

**\$234,998**

0 Bedroom, 0.00 Bathroom,  
Single Family on 0.00 Acres

Erin Ridge North, St. Albert, AB

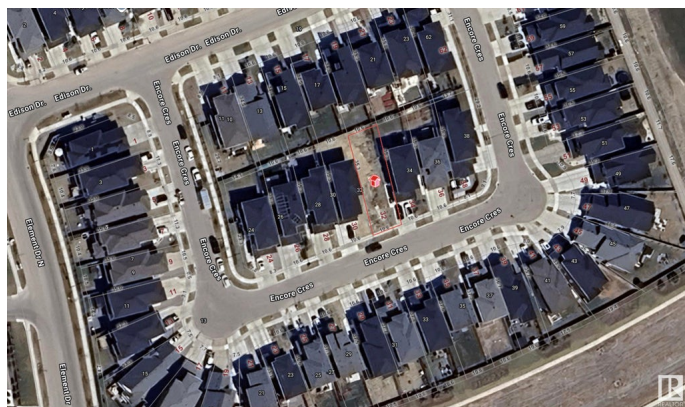
Build Your Dream Home in St. Albert! This fully serviced 26â€™™ pocket lot is ready for constructionâ€”just bring your plans and apply for permits. Nestled in a developed section of a growing neighborhood, youâ€™™ll enjoy walking distance to Lois E. Hole Elementary School, Costco, and a variety of shopping and dining options. An opportunity in one of St. Albertâ€™™s most desirable areas!

### Essential Information

MLS® #	E4444453
Price	\$234,998
Bathrooms	0.00
Acres	0.00
Type	Single Family
Sub-Type	Vacant Lot/Land
Status	Active

### Community Information

Address	32 Encore Crescent
Area	St. Albert
Subdivision	Erin Ridge North
City	St. Albert
County	ALBERTA
Province	AB
Postal Code	T8N 7W1



**Exterior**

Exterior Features   Flat Site, Playground Nearby, Schools, Shopping Nearby

**Additional Information**

Date Listed                June 26th, 2025  
Days on Market        7  
Zoning                      Zone 24

DATA IS DEEMED RELIABLE BUT IS NOT GUARANTEED ACCURATE BY THE REALTORS® ASSOCIATION OF EDMONTON. COPYRIGHT 2025 BY THE REALTORS® ASSOCIATION OF EDMONTON. ALL RIGHTS RESERVED.Trademarks are owned or controlled by the Canadian Real Estate Association (CREA) and identify real estate professionals who are members of CREA (REALTOR®, REALTORS®) and/or the quality of services they provide (MLS®, Multiple Listing Service®)  
Listing information last updated on July 3rd, 2025 at 1:32pm MDT