

## \$359,900 - 10912 155 Street, Edmonton

MLS® #E4444368

**\$359,900**

3 Bedroom, 2.00 Bathroom, 1,041 sqft

Single Family on 0.00 Acres

High Park (Edmonton), Edmonton, AB

CALLING ALL DEVELOPERS....High Park is experiencing a lot of new residential development and here's an excellent infill opportunity for you! Rectangular 687m2 (49.87 ft x 147.9 ft) lot just down the street from High Park Playground. Being sold AS IS WHERE IS and lot value only.

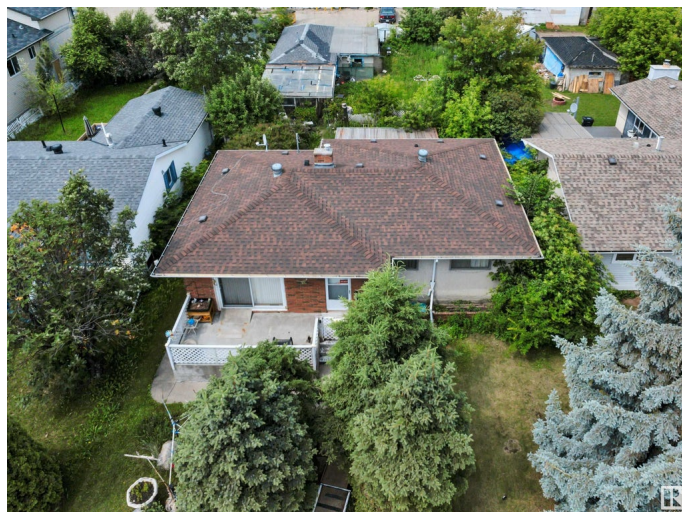
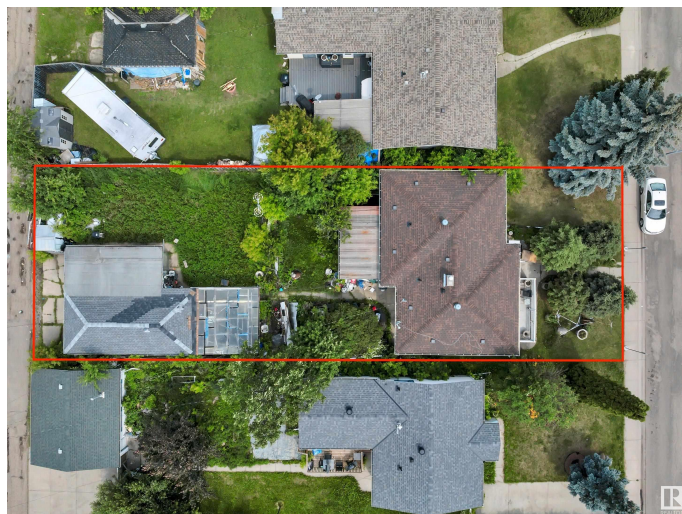
Built in 1958

### Essential Information

MLS® #	E4444368
Price	\$359,900
Bedrooms	3
Bathrooms	2.00
Full Baths	2
Square Footage	1,041
Acres	0.00
Year Built	1958
Type	Single Family
Sub-Type	Detached Single Family
Style	Bungalow
Status	Active

### Community Information

Address	10912 155 Street
Area	Edmonton
Subdivision	High Park (Edmonton)



City	Edmonton
County	ALBERTA
Province	AB
Postal Code	T5P 2N1

### **Amenities**

Amenities	Infill Property
Parking	Double Garage Detached

### **Interior**

Appliances	Dryer, Freezer, Washer, Refrigerators-Two, Stoves-Two
Heating	Forced Air-1, Natural Gas
Stories	2
Has Basement	Yes
Basement	Full, Finished

### **Exterior**

Exterior	Wood, Brick
Exterior Features	Back Lane, Flat Site, Public Transportation, Schools, Shopping Nearby
Roof	Asphalt Shingles
Construction	Wood, Brick
Foundation	Concrete Perimeter

### **Additional Information**

Date Listed	June 26th, 2025
Days on Market	11
Zoning	Zone 21

DATA IS DEEMED RELIABLE BUT IS NOT GUARANTEED ACCURATE BY THE REALTORS® ASSOCIATION OF EDMONTON. COPYRIGHT 2025 BY THE REALTORS® ASSOCIATION OF EDMONTON. ALL RIGHTS RESERVED. Trademarks are owned or controlled by the Canadian Real Estate Association (CREA) and identify real estate professionals who are members of CREA (REALTOR®, REALTORS®) and/or the quality of services they provide (MLS®, Multiple Listing Service®)

Listing information last updated on July 7th, 2025 at 3:32am MDT