

## \$549,999 - 4520 210 Street, Edmonton

MLS® #E4444333

### \$549,999

4 Bedroom, 3.50 Bathroom, 1,703 sqft

Single Family on 0.00 Acres

The Hamptons, Edmonton, AB

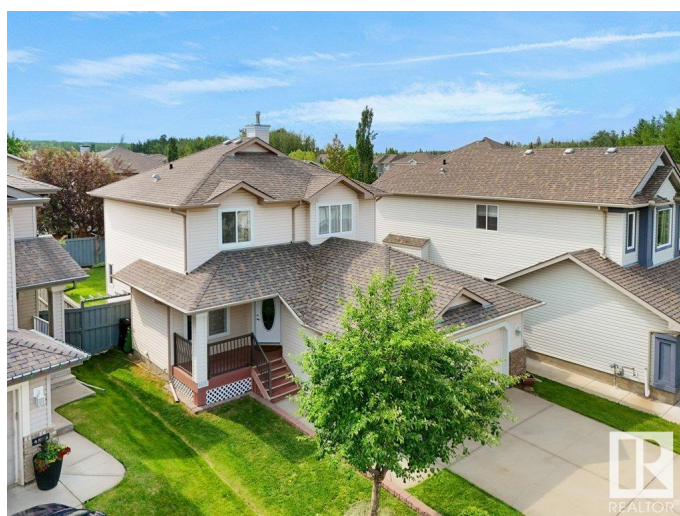
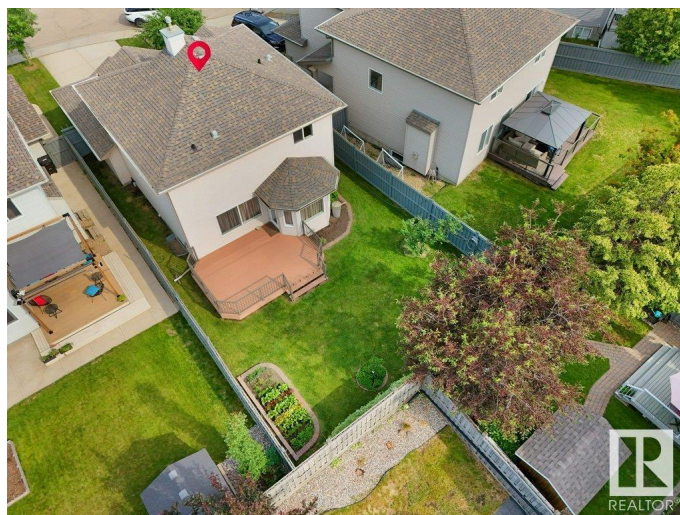
Welcome to this beautiful 2-storey home featuring 4 BEDROOMS, A DEN & 3.5 BATH in sought after community – The Hamptons with an OVERSIZED GARAGE! Discover a bright and functional main floor featuring a DEN, a convenient powder room, and a mudroom with extra closet space. The spacious L-shaped kitchen is a chef’s dream, complete with STAINLESS STEEL APPLIANCES, ample cabinetry, pantry, and open sightlines to the cozy living room with a gas fireplace. The adjacent dining nook leads you to a FULL SIZED DECK, perfect for entertaining, overlooking a fully fenced and beautifully landscaped backyard. Upstairs, you’ll find a generous primary suite with a 4-piece ensuite, along with two additional bedrooms and a 3-piece main bathroom. The fully finished basement adds incredible value with a large rec room, wet bar, fourth bedroom, and full bathroom – ideal for guests, teens, or extended family. Freshly painted throughout and ready for immediate possession – don’t miss this incredible opportunity.

Built in 2007

### Essential Information

MLS® # E4444333

Price \$549,999



Bedrooms	4
Bathrooms	3.50
Full Baths	3
Half Baths	1
Square Footage	1,703
Acres	0.00
Year Built	2007
Type	Single Family
Sub-Type	Detached Single Family
Style	2 Storey
Status	Active

### Community Information

Address	4520 210 Street
Area	Edmonton
Subdivision	The Hamptons
City	Edmonton
County	ALBERTA
Province	AB
Postal Code	T6M 0G5

### Amenities

Amenities	Deck, See Remarks
Parking	Double Garage Attached

### Interior

Interior Features	ensuite bathroom
Appliances	Dishwasher - Energy Star, Dryer, Microwave Hood Fan, Refrigerator, Washer, Window Coverings, Stove-Induction
Heating	Forced Air-1, Natural Gas
Stories	3
Has Basement	Yes
Basement	Full, Finished

### Exterior

Exterior	Wood, Vinyl
Exterior Features	Fruit Trees/Shrubs, Landscaped, Playground Nearby, Public Transportation, Schools, Shopping Nearby, See Remarks
Roof	Asphalt Shingles

Construction Wood, Vinyl  
Foundation Concrete Perimeter

**Additional Information**

Date Listed June 25th, 2025  
Days on Market 22  
Zoning Zone 58  
HOA Fees 150  
HOA Fees Freq. Annually

DATA IS DEEMED RELIABLE BUT IS NOT GUARANTEED ACCURATE BY THE REALTORS<sup>®</sup> ASSOCIATION OF EDMONTON. COPYRIGHT 2025 BY THE REALTORS<sup>®</sup> ASSOCIATION OF EDMONTON. ALL RIGHTS RESERVED. Trademarks are owned or controlled by the Canadian Real Estate Association (CREA) and identify real estate professionals who are members of CREA (REALTOR<sup>®</sup>, REALTORS<sup>®</sup>) and/or the quality of services they provide (MLS<sup>®</sup>, Multiple Listing Service<sup>®</sup>)

Listing information last updated on July 17th, 2025 at 1:33pm MDT