

\$198,900 - 102 11453 Ellerslie Road, Edmonton

MLS® #E4443685

\$198,900

2 Bedroom, 2.00 Bathroom, 798 sqft

Condo / Townhouse on 0.00 Acres

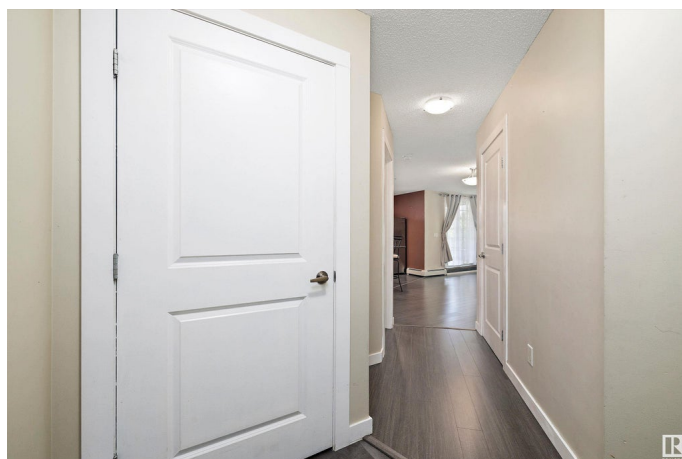
Rutherford (Edmonton), Edmonton, AB

Welcome to RUTHERFORD VILLAGE. 2 BEDROOM 2 BATHROOM CONDO with UNDERGROUND parking. Great location close to all amenities. UPGRADED & UPDATED including paint, flooring, appliances & bathrooms. Open concept MAIN FLOOR UNIT featuring NEWER VINYL PLANK FLOORING, NEWER STAINLESS STEEL APPLIANCES, u-shaped kitchen with tons of counter space & eating area. Living room with sliding doors provides access to the CONCRETE COVERED PATIO. Generous PRIMARY BEDROOM with walk thru closet & a 4 pc. ensuite, a 2nd bedroom, 3 pc. main bathroom & in-suite stacked washer & dryer. 1 HEATED UNDERGROUND parking stall with STORAGE SPACE completes this unit. Shows great & move in ready! You won't be disappointed.

Built in 2005

Essential Information

MLS® #	E4443685
Price	\$198,900
Bedrooms	2
Bathrooms	2.00
Full Baths	2
Square Footage	798
Acres	0.00



Year Built	2005
Type	Condo / Townhouse
Sub-Type	Lowrise Apartment
Style	Single Level Apartment
Status	Active

Community Information

Address	102 11453 Ellerslie Road
Area	Edmonton
Subdivision	Rutherford (Edmonton)
City	Edmonton
County	ALBERTA
Province	AB
Postal Code	T6W 1T3

Amenities

Amenities	Closet Organizers, Intercom, Low Flw/Dual Flush Toilet, Parking-Visitor, Patio, Secured Parking
Parking	Underground

Interior

Interior Features	ensuite bathroom
Appliances	Dishwasher-Built-In, Fan-Ceiling, Hood Fan, Refrigerator, Stacked Washer/Dryer, Stove-Electric, Window Coverings
Heating	Baseboard, Hot Water, Natural Gas
# of Stories	4
Stories	1
Has Basement	Yes
Basement	None, No Basement

Exterior

Exterior	Wood, Brick, Stucco
Exterior Features	Flat Site, Landscaped, Playground Nearby, Public Transportation, Schools, Shopping Nearby
Roof	Asphalt Shingles
Construction	Wood, Brick, Stucco
Foundation	Concrete Perimeter

School Information

Elementary	Johnny Bright School
------------	----------------------

Middle	Johnny Bright School
High	Dr. Anne Anderson School

Additional Information

Date Listed	June 21st, 2025
Days on Market	27
Zoning	Zone 55
Condo Fee	\$555

DATA IS DEEMED RELIABLE BUT IS NOT GUARANTEED ACCURATE BY THE REALTORS® ASSOCIATION OF EDMONTON. COPYRIGHT 2025 BY THE REALTORS® ASSOCIATION OF EDMONTON. ALL RIGHTS RESERVED. Trademarks are owned or controlled by the Canadian Real Estate Association (CREA) and identify real estate professionals who are members of CREA (REALTOR®, REALTORS®) and/or the quality of services they provide (MLS®, Multiple Listing Service®)

Listing information last updated on July 18th, 2025 at 9:17am MDT