

## \$554,900 - 6056 Naden Landing, Edmonton

MLS® #E4441896

**\$554,900**

4 Bedroom, 2.50 Bathroom, 1,722 sqft

Single Family on 0.00 Acres

Griesbach, Edmonton, AB

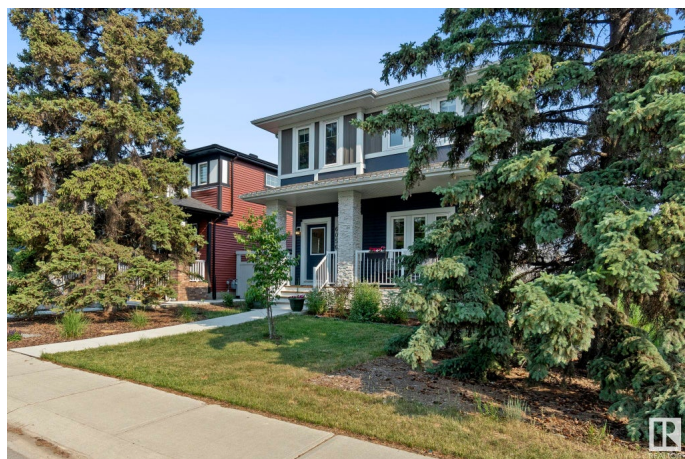
Absolutely immaculate home nestled in the award-winning community of Griesbach! This stunning two-story residence offers 3+1 bedrooms, 2.5 bathrooms, a fully finished basement, and air conditioning—the perfect blend of comfort, style, and functionality. The open-concept design features an elegant island kitchen with quartz countertops, stainless steel appliances, and modern cabinetry. The inviting front living room showcases a charming electric fireplace and large windows that flood the main level with warm, natural light. Upstairs, you’ll find three spacious bedrooms, including a luxurious primary suite with a spa-like five-piece bath and walk-in closet. The fully finished basement adds even more space, with a fourth bedroom, expansive recreational area, and ample storage. Ideally located steps from beautiful walking trails, lakes, and parks—perfect for embracing a healthy, active lifestyle. Close to all amenities, this incredible home won’t last long. Don’t miss out!

Built in 2019

### Essential Information

MLS® # E4441896

Price \$554,900



Bedrooms	4
Bathrooms	2.50
Full Baths	2
Half Baths	1
Square Footage	1,722
Acres	0.00
Year Built	2019
Type	Single Family
Sub-Type	Detached Single Family
Style	2 Storey
Status	Active

### Community Information

Address	6056 Naden Landing
Area	Edmonton
Subdivision	Griesbach
City	Edmonton
County	ALBERTA
Province	AB
Postal Code	T5E 6X9

### Amenities

Amenities	Air Conditioner, Deck
Parking	Double Garage Detached

### Interior

Interior Features	ensuite bathroom
Appliances	Air Conditioning-Central, Dishwasher-Built-In, Dryer, Garage Control, Garage Opener, Hood Fan, Oven-Microwave, Refrigerator, Stove-Gas, Washer
Heating	Forced Air-1, Natural Gas
Fireplace	Yes
Fireplaces	Insert
Stories	2
Has Basement	Yes
Basement	Full, Finished

### Exterior

Exterior	Wood, Vinyl
----------	-------------

Exterior Features	Back Lane, Fenced, Landscaped, Playground Nearby
Roof	Asphalt Shingles
Construction	Wood, Vinyl
Foundation	Concrete Perimeter

**Additional Information**

Date Listed	June 12th, 2025
Days on Market	5
Zoning	Zone 27

DATA IS DEEMED RELIABLE BUT IS NOT GUARANTEED ACCURATE BY THE REALTORS® ASSOCIATION OF EDMONTON. COPYRIGHT 2025 BY THE REALTORS® ASSOCIATION OF EDMONTON. ALL RIGHTS RESERVED.Trademarks are owned or controlled by the Canadian Real Estate Association (CREA) and identify real estate professionals who are members of CREA (REALTOR®, REALTORS®) and/or the quality of services they provide (MLS®, Multiple Listing Service®)

Listing information last updated on June 16th, 2025 at 9:31pm MDT