

Courtesy Of Michael Pino Of RE/MAX Elite

\$520,800 - 10026 93 Street, Edmonton

MLS® #E4440726

\$520,800

3 Bedroom, 1.50 Bathroom, 1,282 sqft

Single Family on 0.00 Acres

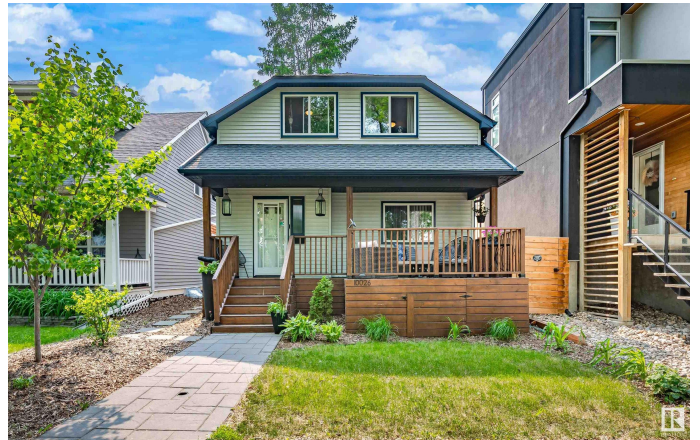
Riverdale, Edmonton, AB

Fantastic home nestled on a quiet tree-lined street in the heart of historic Riverdale. The large front verandah with its cozy seating area welcomes you to this beautifully maintained property. The spacious living room features large windows & laminate flooring throughout the main floor. The kitchen offers modern appliances, a sleek backsplash, & a bright adjacent dining area complete with access to the rear patio & a built-in credenza -enhancing the home's historic charm. The upper level holds a 4pc bath & 3 bedrooms, plus a balcony in the primary bedroom overlooking the serene backyard. A convenient 2pc bath is tucked off the kitchen, near the side entrance leading to the basement, which provides a dedicated laundry area & ample storage. The backyard retreat boasts lush perennial gardens, a tranquil water feature, stone pathways, & a patio -perfect for gatherings or relaxing. Only half a block from park amenities, trails, dedicated Community League, & walking distance to downtown.

Built in 1912

Essential Information

MLS® #	E4440726
Price	\$520,800
Bedrooms	3



Bathrooms	1.50
Full Baths	1
Half Baths	1
Square Footage	1,282
Acres	0.00
Year Built	1912
Type	Single Family
Sub-Type	Detached Single Family
Style	2 Storey
Status	Active

Community Information

Address	10026 93 Street
Area	Edmonton
Subdivision	Riverdale
City	Edmonton
County	ALBERTA
Province	AB
Postal Code	T5H 1W7

Amenities

Amenities	Deck, Detectors Smoke, Patio, Smart/Program. Thermostat
Parking	See Remarks

Interior

Appliances	Dishwasher-Built-In, Dryer, Fan-Ceiling, Freezer, Hood Fan, Refrigerator, Stove-Electric, Washer, Window Coverings
Heating	Forced Air-1, Natural Gas
Stories	2
Has Basement	Yes
Basement	Full, Unfinished

Exterior

Exterior	Wood, Vinyl
Exterior Features	Back Lane, Fenced, Landscaped, Playground Nearby, Public Transportation, Schools
Roof	Asphalt Shingles
Construction	Wood, Vinyl
Foundation	Block, Brick, Concrete Perimeter

Additional Information

Date Listed June 5th, 2025
Days on Market 11
Zoning Zone 13

DATA IS DEEMED RELIABLE BUT IS NOT GUARANTEED ACCURATE BY THE REALTORS® ASSOCIATION OF EDMONTON. COPYRIGHT 2025 BY THE REALTORS® ASSOCIATION OF EDMONTON. ALL RIGHTS RESERVED.Trademarks are owned or controlled by the Canadian Real Estate Association (CREA) and identify real estate professionals who are members of CREA (REALTOR®, REALTORS®) and/or the quality of services they provide (MLS®, Multiple Listing Service®)
Listing information last updated on June 16th, 2025 at 8:47pm MDT