

\$0 - 1201 76 Avenue, Edmonton

MLS® #E4440554

\$0
0 Bedroom, 0.00 Bathroom,
Land Commercial on 0.00 Acres

Southeast Industrial (Edmonton), Edmonton,
AB

8 acres± of industrial yard available for lease
at 1201 76 Avenue in Edmonton. The site
is fully fenced, well compacted, and zoned IM.
The location offers access to 17th Street with
proximity to Sherwood Park Freeway,
Whitemud Drive, and Anthony Henday Drive.

Built in 1974

Essential Information

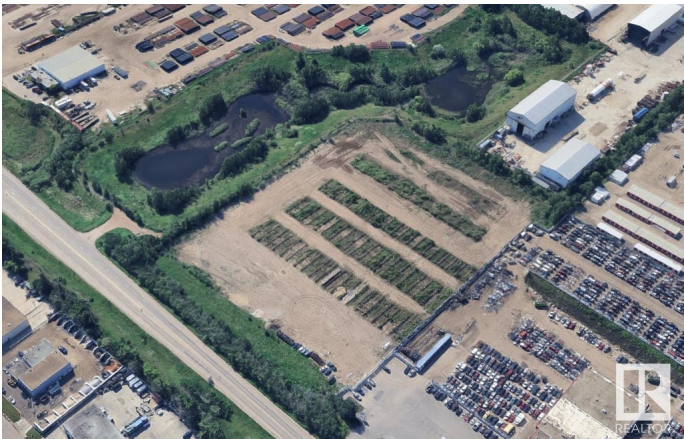
MLS® #	E4440554
Bathrooms	0.00
Acres	0.00
Year Built	1974
Type	Land Commercial
Status	Active

Community Information

Address	1201 76 Avenue
Area	Edmonton
Subdivision	Southeast Industrial (Edmont
City	Edmonton
County	ALBERTA
Province	AB
Postal Code	T6P 1P2

Additional Information

Date Listed	June 5th, 2025
-------------	----------------



Days on Market 64

Zoning Zone 42

DATA IS DEEMED RELIABLE BUT IS NOT GUARANTEED ACCURATE BY THE REALTORS® ASSOCIATION OF EDMONTON. COPYRIGHT 2025 BY THE REALTORS® ASSOCIATION OF EDMONTON. ALL RIGHTS RESERVED. Trademarks are owned or controlled by the Canadian Real Estate Association (CREA) and identify real estate professionals who are members of CREA (REALTOR®, REALTORS®) and/or the quality of services they provide (MLS®, Multiple Listing Service®)

Listing information last updated on August 8th, 2025 at 3:02pm MDT