

\$695,000 - 1920 33b Street, Edmonton

MLS® #E4440297

\$695,000

4 Bedroom, 3.50 Bathroom, 2,225 sqft

Single Family on 0.00 Acres

Laurel, Edmonton, AB

FULLY FINISHED! SECOND KITCHEN! PIE LOT! Landmark Built 2 Storey home in the Laurel neighborhood featuring 3+1 bedrooms, 3.5 baths, and a **WALKOUT BASEMENT!** The main floor showcases an Open Concept design with a chef's kitchen boasting granite countertops, stainless steel appliances, a spacious island, plus walk through pantry. A comfortable living area with a gas fireplace, dining space, a convenient 2 piece bath and Main Floor Laundry complete the main level. Upstairs, discover a sprawling Bonus Room, 3 bedrooms, including a lavish Primary Suite with a 4 piece ensuite. The fully finished basement offers a bedroom, 3 piece bath, a Second Kitchen, and a versatile recreation room. Enjoy outdoor living in the Fully Fenced backyard with a patio, lower level and upper level decks, PLUS a Double Attached garage featuring a unique **SPICE KITCHEN!** This exceptional property is ideally located near schools, shopping, public transportation, and more.

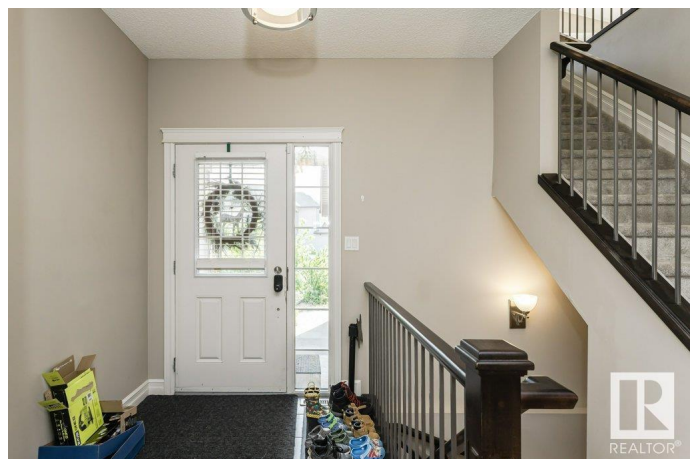
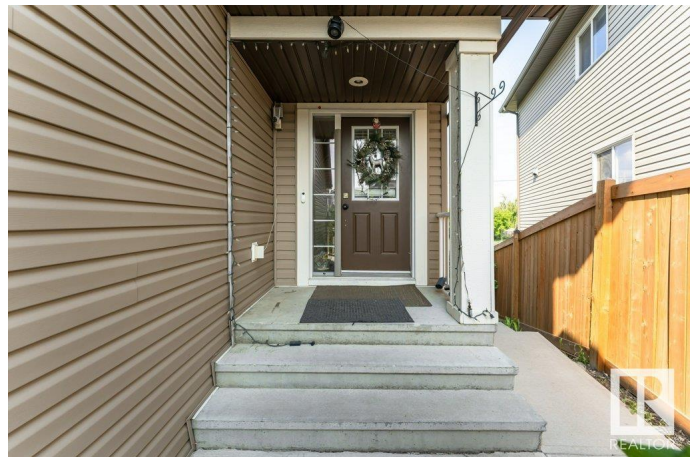
Built in 2012

Essential Information

MLS® # E4440297

Price \$695,000

Bedrooms 4



Bathrooms	3.50
Full Baths	3
Half Baths	1
Square Footage	2,225
Acres	0.00
Year Built	2012
Type	Single Family
Sub-Type	Detached Single Family
Style	2 Storey
Status	Active

Community Information

Address	1920 33b Street
Area	Edmonton
Subdivision	Laurel
City	Edmonton
County	ALBERTA
Province	AB
Postal Code	T6T 0L3

Amenities

Amenities	Deck, Patio
Parking	Double Garage Attached

Interior

Interior Features	ensuite bathroom
Appliances	Dishwasher-Built-In, Dryer, Garage Control, Garage Opener, Oven-Microwave, Stove-Electric, Stove-Gas, Washer, Window Coverings, Refrigerators-Two
Heating	Forced Air-1, Natural Gas
Stories	3
Has Basement	Yes
Basement	Full, Finished

Exterior

Exterior	Wood, Vinyl
Exterior Features	Fenced, Landscaped, Public Transportation, Schools, Shopping Nearby
Roof	Asphalt Shingles
Construction	Wood, Vinyl

Foundation Concrete Perimeter

Additional Information

Date Listed June 4th, 2025

Days on Market 13

Zoning Zone 30

DATA IS DEEMED RELIABLE BUT IS NOT GUARANTEED ACCURATE BY THE REALTORS® ASSOCIATION OF EDMONTON. COPYRIGHT 2025 BY THE REALTORS® ASSOCIATION OF EDMONTON. ALL RIGHTS RESERVED.Trademarks are owned or controlled by the Canadian Real Estate Association (CREA) and identify real estate professionals who are members of CREA (REALTOR®, REALTORS®) and/or the quality of services they provide (MLS®, Multiple Listing Service®)

Listing information last updated on June 16th, 2025 at 10:17pm MDT