

\$899,800 - 1701 10731 Saskatchewan Drive, Edmonton

MLS® #E4438663

\$899,800

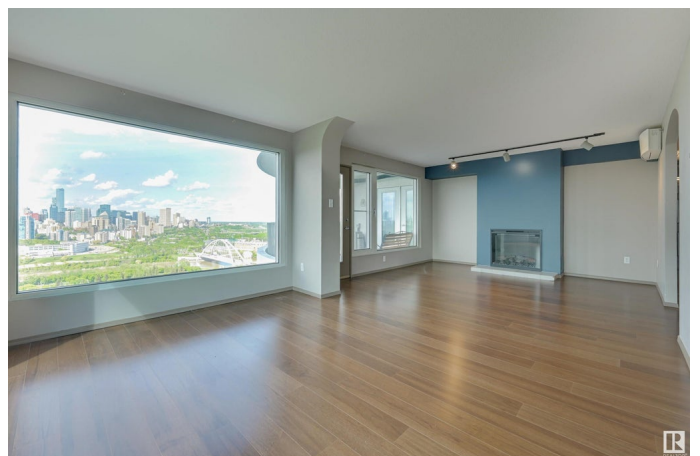
3 Bedroom, 2.00 Bathroom, 1,830 sqft
Condo / Townhouse on 0.00 Acres

Garneau, Edmonton, AB

SPECTACULAR UNOBSTRUCTED 270 degree RIVER VALLEY, DOWNTOWN SKYLINE & CITY VIEWS from this 1830 sq.ft. HALF FLOOR EXECUTIVE suite in RIVERWIND located on Saskatchewan Dr. in the heart of Strathcona steps to the walking/biking trails, Whyte Ave. & quick access to the U of A & Downtown. Riverwind is a wonderful COMMUNITY, it is PET FRIENDLY & has an EXCEPTIONAL ON-SITE MANAGER that lives on-site. TWO UNDERGROUND PARKING, AIR CONDITIONED, FLOOR TO CEILING WINDOWS with vision wall (4 pane) windows with north, west & south exposures with 3 BEDROOMS, 2 BATHROOMS & 2 LARGE BALCONIES to enjoy the gorgeous views. Renovated kitchen with ample cabinetry, granite counters, picture window above the sink, breakfast bar & eat-in area. Electric fireplace in the family room. Gas BBQ included & an extra storage locker in the parkade. Riverwind is a very well managed building with a fitness room, games room, party room, guest suite & visitor parking. A great opportunity for a one-of-a-kind unit with fabulous views!

Built in 1990

Essential Information



MLS® #	E4438663
Price	\$899,800
Bedrooms	3
Bathrooms	2.00
Full Baths	2
Square Footage	1,830
Acres	0.00
Year Built	1990
Type	Condo / Townhouse
Sub-Type	Apartment High Rise
Style	Single Level Apartment
Status	Active

Community Information

Address	1701 10731 Saskatchewan Drive
Area	Edmonton
Subdivision	Garneau
City	Edmonton
County	ALBERTA
Province	AB
Postal Code	T6E 6H1

Amenities

Amenities	Air Conditioner, Deck, Exercise Room, Guest Suite, Parking-Visitor, Party Room, Patio, Recreation Room/Centre, Secured Parking, Security Door, Storage-In-Suite, Workshop, Storage Cage, Natural Gas BBQ Hookup
Parking Spaces	2
Parking	Underground

Interior

Interior Features	ensuite bathroom
Appliances	Air Conditioning-Central, Dishwasher-Built-In, Dryer, Refrigerator, Stove-Electric, Washer, Window Coverings, See Remarks
Heating	See Remarks, Electric
Fireplace	Yes
Fireplaces	Wall Mount
# of Stories	19
Stories	1

Has Basement	Yes
Basement	None, No Basement

Exterior

Exterior	Concrete, Stucco
Exterior Features	Golf Nearby, Playground Nearby, Public Transportation, River Valley View, Schools, Shopping Nearby, View City, View Downtown, See Remarks
Roof	Tar & Gravel
Construction	Concrete, Stucco
Foundation	Concrete Perimeter

Additional Information

Date Listed	May 26th, 2025
Days on Market	39
Zoning	Zone 15
Condo Fee	\$1,797

DATA IS DEEMED RELIABLE BUT IS NOT GUARANTEED ACCURATE BY THE REALTORS® ASSOCIATION OF EDMONTON. COPYRIGHT 2025 BY THE REALTORS® ASSOCIATION OF EDMONTON. ALL RIGHTS RESERVED.Trademarks are owned or controlled by the Canadian Real Estate Association (CREA) and identify real estate professionals who are members of CREA (REALTOR®, REALTORS®) and/or the quality of services they provide (MLS®, Multiple Listing Service®)

Listing information last updated on July 4th, 2025 at 11:02am MDT