

Courtesy Of Lori-Anne K Hayne Of Initia Real Estate

\$249,700 - 209 6070 Schonsee Way, Edmonton

MLS® #E4434448

\$249,700

2 Bedroom, 2.00 Bathroom, 791 sqft

Condo / Townhouse on 0.00 Acres

Schonsee, Edmonton, AB

This stylish and low-maintenance 2-bedroom, 2-bath condo with TITLED UNDERGROUND PARKING - perfect for investors or first-time buyers! This well-maintained unit features vinyl plank flooring throughout the open-concept main living space. Functional kitchen with ample cabinetry, stainless appliances, a raised breakfast bar and room for a kitchen table. A nice sized living area leads a west facing balcony. 2 nice sized bedrooms on either side of the suite for privacy. Primary bedroom features a walk through closet with an armoire wardrobe. Ensuite bathroom with walk in shower. Convenient in-suite laundry, large storage closet and 4 piece main bathroom complete the main living space. Convenient titled heated underground parking, keeping your vehicle secure year-round. With a low monthly condo fee, this property offers excellent value and minimal upkeep. Desirable family friendly neighbourhood, close to schools, parks, transit & all amenities, easy access to the Henday.

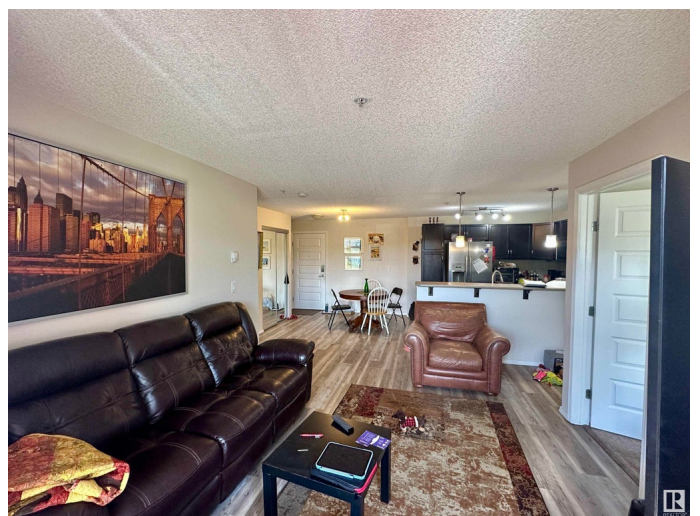
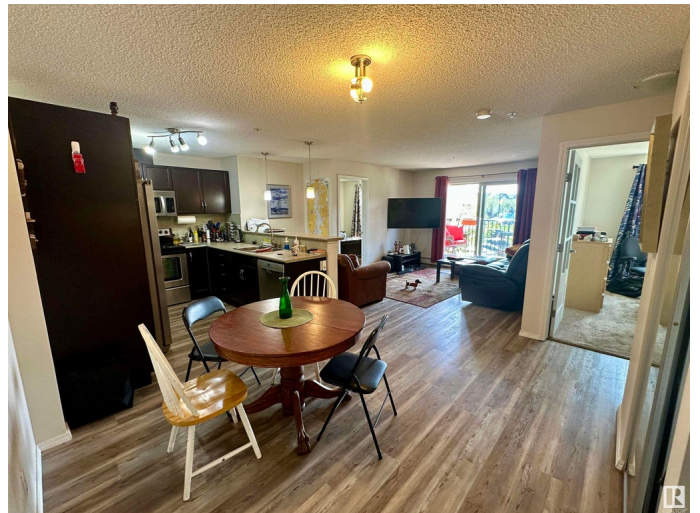
Built in 2011

Essential Information

MLS® # E4434448

Price \$249,700

Bedrooms 2



Bathrooms	2.00
Full Baths	2
Square Footage	791
Acres	0.00
Year Built	2011
Type	Condo / Townhouse
Sub-Type	Lowrise Apartment
Style	Single Level Apartment
Status	Active

Community Information

Address	209 6070 Schonsee Way
Area	Edmonton
Subdivision	Schonsee
City	Edmonton
County	ALBERTA
Province	AB
Postal Code	T5Z 0G8

Amenities

Amenities	Closet Organizers, Exercise Room, No Smoking Home, Parking-Visitor, Secured Parking, Security Door
Parking Spaces	1
Parking	Heated, Underground

Interior

Interior Features	ensuite bathroom
Appliances	Dishwasher-Built-In, Microwave Hood Fan, Refrigerator, Stacked Washer/Dryer, Stove-Electric, Window Coverings
Heating	Hot Water, Natural Gas
# of Stories	4
Stories	1
Has Basement	Yes
Basement	None, No Basement

Exterior

Exterior	Wood, Stone, Vinyl
Exterior Features	Low Maintenance Landscape, Playground Nearby, Public Transportation, Schools, Shopping Nearby

Roof	Asphalt Shingles
Construction	Wood, Stone, Vinyl
Foundation	Concrete Perimeter

School Information

Elementary	Northmount School
Middle	Dickinsfield School
High	M.E. LaZerte School

Additional Information

Date Listed	May 4th, 2025
Days on Market	6
Zoning	Zone 28
Condo Fee	\$347

DATA IS DEEMED RELIABLE BUT IS NOT GUARANTEED ACCURATE BY THE REALTORS® ASSOCIATION OF EDMONTON. COPYRIGHT 2025 BY THE REALTORS® ASSOCIATION OF EDMONTON. ALL RIGHTS RESERVED. Trademarks are owned or controlled by the Canadian Real Estate Association (CREA) and identify real estate professionals who are members of CREA (REALTOR®, REALTORS®) and/or the quality of services they provide (MLS®, Multiple Listing Service®)

Listing information last updated on May 10th, 2025 at 10:17am MDT