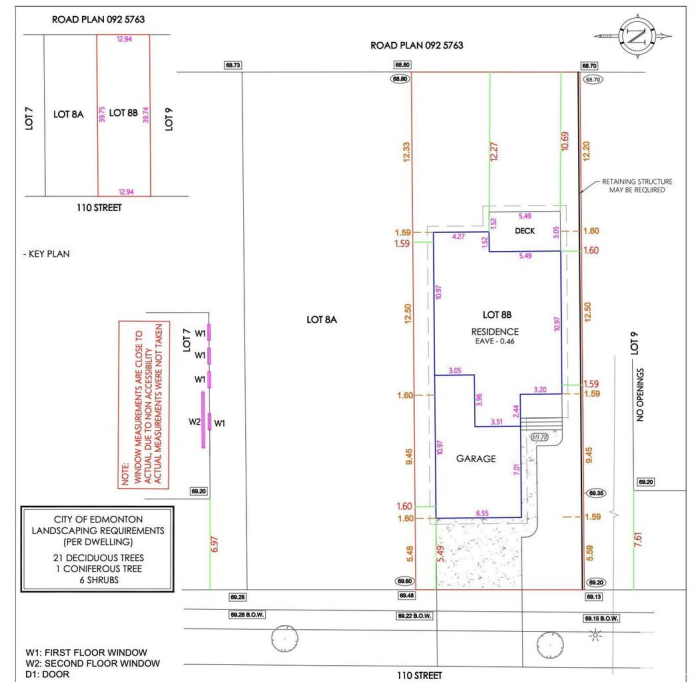
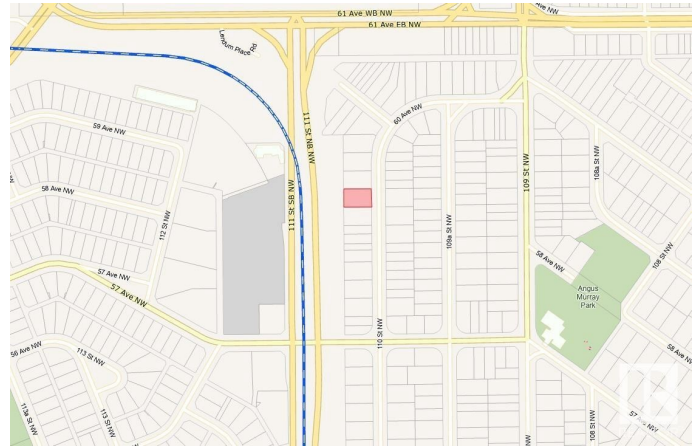


**\$525,000**

Pleasantview (Edmonton), Edmonton, AB

Prime Building Lot in the Heart of Pleasantview. This fully serviced vacant lot, measuring 42.5' x 135', is ready for your dream home. Nestled on a picturesque, tree-lined street in the highly sought-after Pleasantview community, this property offers the perfect foundation for your ideal infill project. Don't miss this exceptional opportunity to create a home in one of the area's most desirable neighborhoods.



## Essential Information

MLS® #	E4434195
Price	\$525,000
Bathrooms	0.00
Acres	0.00
Type	Single Family
Sub-Type	Vacant Lot/Land
Status	Active

## Community Information

Address	5822 110 Street
Area	Edmonton
Subdivision	Pleasantview (Edmonton)
City	Edmonton
County	ALBERTA
Province	AB
Postal Code	T6H 3E3

**Exterior**

Exterior Features    Playground Nearby, Schools, Shopping Nearby

**Additional Information**

Date Listed                May 1st, 2025

Days on Market        7

Zoning                    Zone 15

DATA IS DEEMED RELIABLE BUT IS NOT GUARANTEED ACCURATE BY THE REALTORS® ASSOCIATION OF EDMONTON. COPYRIGHT 2025 BY THE REALTORS® ASSOCIATION OF EDMONTON. ALL RIGHTS RESERVED.Trademarks are owned or controlled by the Canadian Real Estate Association (CREA) and identify real estate professionals who are members of CREA (REALTOR®, REALTORS®) and/or the quality of services they provide (MLS®, Multiple Listing Service®)

Listing information last updated on May 8th, 2025 at 2:32am MDT