

\$529,888 - 6469 King Wynd, Edmonton

MLS® #E4433134

\$529,888

4 Bedroom, 3.50 Bathroom, 1,638 sqft

Single Family on 0.00 Acres

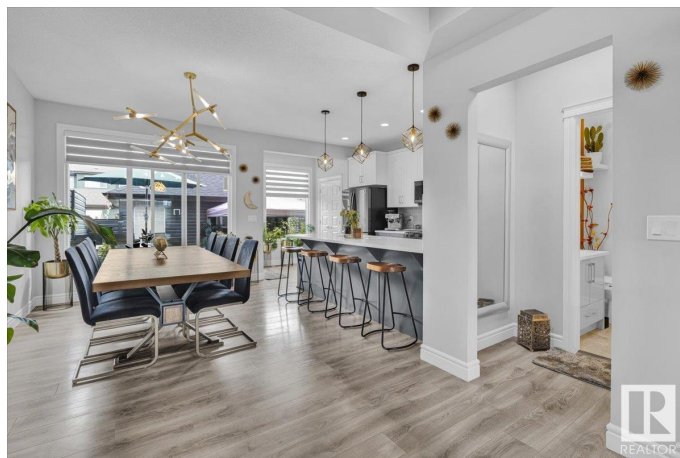
Keswick Area, Edmonton, AB

Modern, well-maintained half duplex in the sought-after Keswick community! Bright natural light pours into the open-concept layout, featuring a stylish kitchen with stainless steel appliances. Comes fully furnished - ready to enjoy with a developed basement and side entry. Detached garage includes a window, epoxy floor, R20 insulation, textured ceilings, and painted drywall. Enjoy the fully landscaped, fully fenced yard with a spacious two-level deckâ€”perfect for relaxing or entertaining. Move-in ready with upgraded finishes throughout, this home is steps from scenic ponds, parks, and walking trails. A perfect blend of style, comfort, and location!! HOA TBD

Built in 2020

Essential Information

| | |
|----------------|-----------|
| MLS® # | E4433134 |
| Price | \$529,888 |
| Bedrooms | 4 |
| Bathrooms | 3.50 |
| Full Baths | 3 |
| Half Baths | 1 |
| Square Footage | 1,638 |
| Acres | 0.00 |
| Year Built | 2020 |



| | |
|----------|---------------|
| Type | Single Family |
| Sub-Type | Half Duplex |
| Style | 2 Storey |
| Status | Active |

Community Information

| | |
|-------------|----------------|
| Address | 6469 King Wynd |
| Area | Edmonton |
| Subdivision | Keswick Area |
| City | Edmonton |
| County | ALBERTA |
| Province | AB |
| Postal Code | T6W 3Z9 |

Amenities

| | |
|-----------|--|
| Amenities | Deck, See Remarks |
| Parking | Double Garage Detached, Insulated, See Remarks |

Interior

| | |
|-------------------|--|
| Interior Features | ensuite bathroom |
| Appliances | Dishwasher-Built-In, Dryer, Furniture Included, Microwave Hood Fan, Refrigerator, Stove-Electric, Washer, Window Coverings |
| Heating | Forced Air-1, Natural Gas |
| Fireplace | Yes |
| Fireplaces | Insert |
| Stories | 3 |
| Has Basement | Yes |
| Basement | Full, Finished |

Exterior

| | |
|-------------------|---|
| Exterior | Wood, Vinyl, Hardie Board Siding |
| Exterior Features | Airport Nearby, Back Lane, Fenced, Landscaped, Playground Nearby, Public Transportation, Schools, Shopping Nearby, Stream/Pond, See Remarks |
| Roof | Asphalt Shingles |
| Construction | Wood, Vinyl, Hardie Board Siding |
| Foundation | Concrete Perimeter |

Additional Information

| | |
|-------------|------------------|
| Date Listed | April 28th, 2025 |
|-------------|------------------|

| | |
|----------------|----------|
| Days on Market | 4 |
| Zoning | Zone 56 |
| HOA Fees | 1 |
| HOA Fees Freq. | Annually |

DATA IS DEEMED RELIABLE BUT IS NOT GUARANTEED ACCURATE BY THE REALTORS® ASSOCIATION OF EDMONTON. COPYRIGHT 2025 BY THE REALTORS® ASSOCIATION OF EDMONTON. ALL RIGHTS RESERVED. Trademarks are owned or controlled by the Canadian Real Estate Association (CREA) and identify real estate professionals who are members of CREA (REALTOR®, REALTORS®) and/or the quality of services they provide (MLS®, Multiple Listing Service®)

Listing information last updated on May 2nd, 2025 at 7:17pm MDT