

\$774,900 - 9023 156a Avenue, Edmonton

MLS® #E4430598

\$774,900

7 Bedroom, 5.00 Bathroom, 2,643 sqft

Single Family on 0.00 Acres

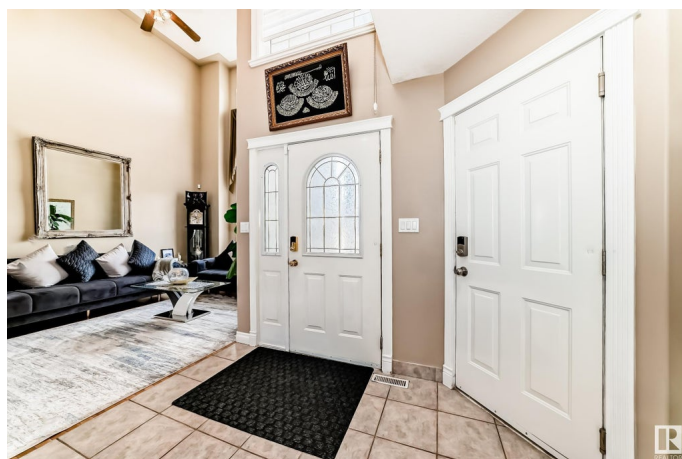
Eaux Claires, Edmonton, AB

Welcome to your dream home in the heart of Eaux Claires! Tucked away in a quiet cul-de-sac, this spacious 7-BEDROOM, 5-BATHROOM home has over 3500 Sqft of living space and room for the whole family. Youâ€™ll love the triple-car garage, huge backyard, and thoughtful layout. The main floor features a full bedroom and bathroom, perfect for guests or extended family, as well as both a living room and a family room for added space. Upstairs has 4 bedrooms, including 2 with their own en-suite bathrooms. The fully finished basement features a second kitchen, 2 more bedrooms, and a full bathâ€”ideal for in-laws or a growing family. Close to schools, shopping, parks, and everything your family needs. Come see why pride of ownership truly shines in this beautiful home!

Built in 2002

Essential Information

| | |
|----------------|-----------|
| MLS® # | E4430598 |
| Price | \$774,900 |
| Bedrooms | 7 |
| Bathrooms | 5.00 |
| Full Baths | 5 |
| Square Footage | 2,643 |
| Acres | 0.00 |



| | |
|------------|------------------------|
| Year Built | 2002 |
| Type | Single Family |
| Sub-Type | Detached Single Family |
| Style | 2 Storey |
| Status | Active |

Community Information

| | |
|-------------|------------------|
| Address | 9023 156a Avenue |
| Area | Edmonton |
| Subdivision | Eaux Claires |
| City | Edmonton |
| County | ALBERTA |
| Province | AB |
| Postal Code | T5Z 3G2 |

Amenities

| | |
|-----------|-----------------------------------|
| Amenities | Deck, No Animal Home, See Remarks |
| Parking | Triple Garage Attached |

Interior

| | |
|-------------------|---|
| Interior Features | ensuite bathroom |
| Appliances | Dishwasher-Built-In, Dryer, Hood Fan, Washer, Window Coverings, Refrigerators-Two, Stoves-Two |
| Heating | Forced Air-1, Natural Gas |
| Stories | 3 |
| Has Basement | Yes |
| Basement | Full, Finished |

Exterior

| | |
|-------------------|---|
| Exterior | Wood, Stucco |
| Exterior Features | Cul-De-Sac, Fenced, Playground Nearby, Public Transportation, Schools, Shopping Nearby, See Remarks |
| Roof | Asphalt Shingles |
| Construction | Wood, Stucco |
| Foundation | Concrete Perimeter |

Additional Information

| | |
|----------------|------------------|
| Date Listed | April 12th, 2025 |
| Days on Market | 21 |

Zoning

Zone 28

DATA IS DEEMED RELIABLE BUT IS NOT GUARANTEED ACCURATE BY THE REALTORS® ASSOCIATION OF EDMONTON. COPYRIGHT 2025 BY THE REALTORS® ASSOCIATION OF EDMONTON. ALL RIGHTS RESERVED. Trademarks are owned or controlled by the Canadian Real Estate Association (CREA) and identify real estate professionals who are members of CREA (REALTOR®, REALTORS®) and/or the quality of services they provide (MLS®, Multiple Listing Service®)

Listing information last updated on May 2nd, 2025 at 10:47pm MDT