

\$60,000 - N/A, Edmonton

MLS® #E4423006

\$60,000

0 Bedroom, 0.00 Bathroom,
Business on 0.00 Acres

Spruce Avenue, Edmonton, AB

Cannabis store located on the main floor of a three storey building with residential on the upper floors. It is also located near to populated residential area. Note the rent as you donâ€™t pay for any utilities and this is the essential element to succeed in a small business. Please do not approach the employee direct.

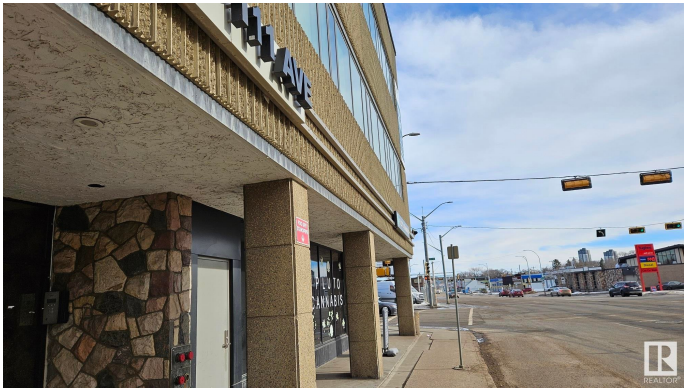
Built in 1969

Essential Information

MLS® #	E4423006
Price	\$60,000
Bathrooms	0.00
Acres	0.00
Year Built	1969
Type	Business
Status	Active

Community Information

Address	N/A
Area	Edmonton
Subdivision	Spruce Avenue
City	Edmonton
County	ALBERTA
Province	AB
Postal Code	T5G 0B3



Additional Information

Date Listed February 26th, 2025
Days on Market 183
Zoning Zone 08

DATA IS DEEMED RELIABLE BUT IS NOT GUARANTEED ACCURATE BY THE REALTORS® ASSOCIATION OF EDMONTON. COPYRIGHT 2025 BY THE REALTORS® ASSOCIATION OF EDMONTON. ALL RIGHTS RESERVED.Trademarks are owned or controlled by the Canadian Real Estate Association (CREA) and identify real estate professionals who are members of CREA (REALTOR®, REALTORS®) and/or the quality of services they provide (MLS®, Multiple Listing Service®)
Listing information last updated on August 28th, 2025 at 9:17am MDT