

# \$169,000 - 214 111 Watt Common Common, Edmonton

MLS® #E4421508

**\$169,000**

1 Bedroom, 1.00 Bathroom, 670 sqft

Condo / Townhouse on 0.00 Acres

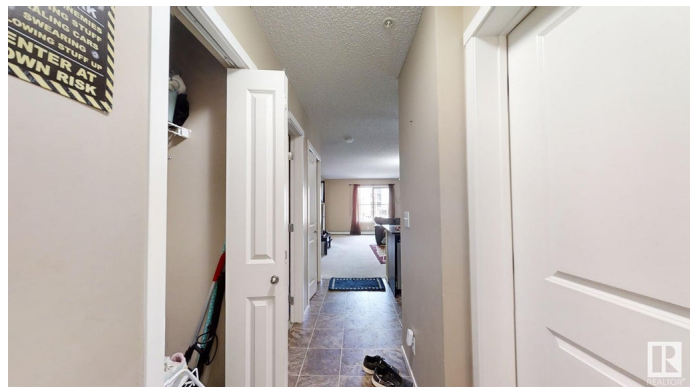
Walker, Edmonton, AB

This 1 Bedroom, 1 Den-Office and 1 Bath Condo in Walker Lakes sounds like a great find !! This property is perfectly located right next to Watt Common Shopping Center, parks, schools and have easy access to Anthony Henday. This suite is perfectly situated with close proximity to Walmart, Superstore, Bus stop And Jr. High School. This Condo features a den that can be utilized as additional bedroom or office. The upgrades to this condo include stainless steel appliances, quartz countertop, in-suite laundry, rough-in for Air conditioner and a good size balcony. There is one outdoor assigned parking stall and a titled parking stall. Perfect opportunity to call this property home or as desirable rental property.

Built in 2014

## Essential Information

|                |                   |
|----------------|-------------------|
| MLS® #         | E4421508          |
| Price          | \$169,000         |
| Bedrooms       | 1                 |
| Bathrooms      | 1.00              |
| Full Baths     | 1                 |
| Square Footage | 670               |
| Acres          | 0.00              |
| Year Built     | 2014              |
| Type           | Condo / Townhouse |



|          |                        |
|----------|------------------------|
| Sub-Type | Lowrise Apartment      |
| Style    | Single Level Apartment |
| Status   | Active                 |

### Community Information

|             |                            |
|-------------|----------------------------|
| Address     | 214 111 Watt Common Common |
| Area        | Edmonton                   |
| Subdivision | Walker                     |
| City        | Edmonton                   |
| County      | ALBERTA                    |
| Province    | AB                         |
| Postal Code | T6X 2C6                    |

### Amenities

|                |  |
|----------------|--|
| Amenities      | Carbon Monoxide Detectors, Detectors Smoke, No Animal Home, No Smoking Home, Parking-Visitor, Security Door, Vinyl Windows |
| Parking Spaces | 2  |
| Parking        | 2 Outdoor Stalls   |

### Interior

|              |  |
|--------------|--|
| Appliances   | Dishwasher-Built-In, Dryer, Microwave Hood Fan, Refrigerator, Stove-Electric, Washer |
| Heating      | Baseboard, Natural Gas   |
| # of Stories | 4  |
| Stories      | 1  |
| Has Basement | Yes  |
| Basement     | None, No Basement  |

### Exterior

|                   |  |
|-------------------|--|
| Exterior          | Wood, Asphalt, Fiber Cement, Vinyl   |
| Exterior Features | Airport Nearby, Golf Nearby, Picnic Area, Playground Nearby, Public Swimming Pool, Public Transportation, Schools, Shopping Nearby |
| Roof              | Asphalt Shingles   |
| Construction      | Wood, Asphalt, Fiber Cement, Vinyl   |
| Foundation        | Concrete Perimeter   |

### School Information

|            |                          |
|------------|--------------------------|
| Elementary | Shauna May Seneca School |
| Middle     | Riverbend School         |
| High       | J percy Page School      |

**Additional Information**

|                |                     |
|----------------|---------------------|
| Date Listed    | February 13th, 2025 |
| Days on Market | 78                  |
| Zoning         | Zone 53             |
| Condo Fee      | \$355               |

DATA IS DEEMED RELIABLE BUT IS NOT GUARANTEED ACCURATE BY THE REALTORS® ASSOCIATION OF EDMONTON. COPYRIGHT 2025 BY THE REALTORS® ASSOCIATION OF EDMONTON. ALL RIGHTS RESERVED.Trademarks are owned or controlled by the Canadian Real Estate Association (CREA) and identify real estate professionals who are members of CREA (REALTOR®, REALTORS®) and/or the quality of services they provide (MLS®, Multiple Listing Service®)

Listing information last updated on May 2nd, 2025 at 3:02pm MDT